



STAINLESS STEEL CASE SEALERS

USA Series Food Grade

USA 2024-SB SS

STAINLESS STEEL SIDE BELT DRIVE

- Constructed from food grade 302 or 304 stainless steel
- NEMA 4 electrics
- HSD™ 2000-ET II stainless tape heads standard
- Detergent wash down at low pressure
- Side belt drive processes a wider range of cases
- Side belts capture the case between two moving belts, reducing force on the case
- Floating upper assembly to process compressible overfills
- Offset taping heads permit processing cases as low as 2" tall
- Single locking handle secures the upper assembly to both columns
- Twin 1/3 HP gear motors process heavier cases 24/7

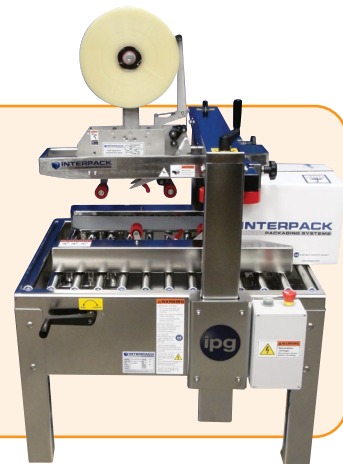


Shown with optional casters and pack tables.

USA 2020-SB SS

STAINLESS STEEL SIDE BELT DRIVE

- Compact design conserves valuable floor space
- Constructed from food grade 302 or 304 stainless steel
- NEMA 4 electrics
- HSD™ 2000-ET II stainless tape heads standard
- Detergent wash down at low pressure
- 3mm steel formed and welded construction
- 2" side belt drives with belt over roller technology
- 1/4 HP gearmotors will process up to 65 lb cases
- Dual column for maximum processing stability
- Threaded rod upper head adjustment
- Reversible controls for left or right handed operation
- Tilt up upper tape head for easy roll replacement



800-474-8273 | itape.com



USA STAINLESS SERIES

MODEL	OPERATING RANGE				UTILITIES		TAPE	MACHINE DIMENSIONS				
	Minimum <i>L × W × H (in)</i>	Maximum <i>L × W × H (in)</i>	Case Wt <i>(lbs)</i>	Belt Speed <i>(ft/min)</i>	Electrical	Pneumatic		Length <i>(in)</i>	Width <i>(in)</i>	Height <i>(in)</i>	Conveyor height <i>(in)</i>	Weight <i>(lbs)</i>
USA 2024-SB SS	6 × 3.5 × 3.5	Inf × 20 × 24	0 - 85	82	110v. 1ph., 60hz, 6A, (2 × 1/3HP)	N/A	36 - 48 (1.5 - 2)	44.5	41.75	73	24 - 30	565 crated
	8 × 8 × 2 opt											
USA 2024-SB SS/3"	6 × 4.5 × 3.5						48 - 72 (2 - 3)					
	8 × 8 × 2 opt											
USA 2020-SB SS USA 2020-SB SS/3"	6 × 4 × 5 6 × 5 × 5	Inf × 20 × 21.5	0 - 65	75	110v. 1ph., 60hz, 6A, (2 × 1/4HP)	N/A	36 - 48 (1.5 - 2) 48 - 72 (2 - 3)	36	38.5	67	24 - 30	449 crated

Top squeezers close to 8"

HSD 2000 STAINLESS SERIES

Model	Maximum Line Speed <i>ft/min (m/min)</i>	Tape Leg Length <i>in (mm)</i>	Tape Width <i>in (mm)</i>		Maximum Roll Diameter <i>in (mm)</i>	Tape Head Dimensions			Weight <i>(boxed)</i>
			Min	Max		Length	Width	Height	
HSD 2000-ETII SS	90 (27.4)	2-2.5 (50.8-63.5)	1.5 (36)	2 (48)	16 (406)	14.87 (378)	3.26 (83)	14.98 (380)	22 lbs
HSD 2000-ETII 3" SS	90 (27.4)	2-2.5 (50.8-63.5)	2.5 (60)	3 (72)	16 (406)	14.87 (378)	4.26 (108)	14.98 (380)	25 lbs

OPTIONS & ACCESSORIES



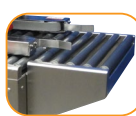
Heavy-duty casters



Tape head spare parts kit



3" wide tape heads



Infeed & exit tables

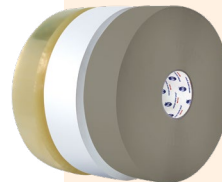
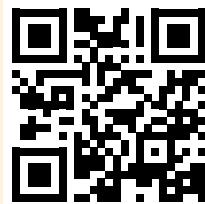


Carton hold-down device



HSD™ 2000-ET II stainless tape heads standard with each stainless machine. Stainless machines available in other models. See your IPG® representative for pricing and lead time.

Scan for more information on Interpack's USA Series, including CAD drawings, manuals and videos!



IPG® is the only North American manufacturer of all 3 types of pressure sensitive adhesives. Combine Interpack™ machinery and IPG® long roll pressure sensitive tape for greater value. Contact your authorized IPG® distributor for details.



Scan for more info or visit itape.com/machines

