



HSD2000-XS

TAPE HEAD

OPERATIONS MANUAL & PARTS LIST



Serial Numbers H088 or H588 XX X XXX

TECHNICAL SUPPORT

Technical Support

This is the Interpack Model HSD2000-XS tape head you ordered. It has been set up and tested in our factory with Intertape manufactured pressure sensitive tapes. If any problems occur when setting up or operating this equipment, please contact the authorized distributor from where you purchased this item.

Should you need to contact **Interpack Technical Support**, please have the Case Sealer **model number and serial number** available. This information can be found on the nameplate of the side panel of the machine. Interpack Technical Support is available during normal business hours (Eastern Time).

PHONE 813-621-8410 x101

If you have a technical question that does not require an immediate response, you may contact Interpack by fax.

FAX 813-621-8449

Replacement Parts

Order parts by item number, part name and quantity required. Replacement parts are available from your Authorized Interpack Distributor exclusively.

Should you require assistance selecting the correct part, you may call:

Intertape Polymer Group
Interpack Machinery
9940 Currie Davis Drive, Suite B23
Tampa, FL, 33619

Tel: 1-800-474-8273 Option 3
Fax: 1-800-462-1293

MODEL: _____

SERIAL NUMBER: _____

DISTRIBUTOR PURCHASED FROM: _____

DATE OF PURCHASE: _____

WARRANTY

EQUIPMENT WARRANTY AND LIMITED REMEDY: The following warranty is made in lieu of all other warranties, express or implied, including, but not limited to, the implied warranty of merchantability, the implied warranty of fitness for a particular purpose, and any implied warranty arising out of a course of dealing, a custom or usage of trade:

Intertape sells its Interpack Tape Heads, Case Tapers and Case Erectors with the following warranties:

1. The HSD® 2000 Tape Heads' knife blades, springs and wipe down rollers will be free from all defects for a period of ninety (90) days.
2. All other HSD® 2000 Tape Head parts will be free from all defects for one (1) year after delivery.
3. Water Activated Tapers' blades and brushes will be free from defects for ninety (90) days after delivery
4. Drive Belts will be free from defects for ninety (90) days after delivery
5. The Gear Motors will be free from defects for one (1) year after delivery.
6. All other components for Case Tapers and Case Erectors will be free from defects for one (1) year after delivery.

If any part is proven defective within its warranty period, then the exclusive remedy and Intertape's and the seller's sole obligation shall be, at Intertape's option, to repair or replace the part, provided the defective part is returned immediately to Intertape's factory or an authorized service station designated by Intertape.

A part will be presumed to have become defective after its warranty period unless the part is received or Intertape is notified of the problem no later than five (5) calendar days after the warranty period.

If Intertape is unable to repair or replace the part within a reasonable time, then Intertape, at its option, will replace the equipment or refund the purchase price. Intertape shall have no obligation to install the repaired or replacement part.

Intertape shall have no obligation to provide or pay for the labor required to install the repaired or replacement part. Intertape shall have no obligation to repair or replace (1) those parts failing due to: operator misuse, carelessness, or due to any accidental cause other than equipment failure, or (2) parts

1. Failure or damage is due to misapplication, lack of proper maintenance, abuse, improper installation or abnormal conditions such as temperature, moisture, dirt or corrosive matter, etc.
2. Failure due to inadequate cleaning, improper operating environment, improper utilities or operator error.
3. Failure due to operations above the rated capacities, or in any other improper manner, either intentional or otherwise.
4. Failure is due to equipment, which has been altered by anyone other than an authorized representative of Intertape Polymer Group.
5. Failure is due to an attempt by the purchaser to correct alleged defective equipment. In this event the purchaser is responsible for all expenses incurred.

LIMITATION OF LIABILITY: Intertape and seller shall not be liable for direct, indirect, special, incidental or consequential damages based upon breach of warranty, breach of contract, negligence, strict liability or any other legal theory.

The foregoing Equipment Warranty and Limited Remedy and Limitation of Liability may be changed only by written agreement signed by authorized officers of Intertape and seller.

THIS PAGE IS LEFT BLANK INTENTIONALLY

SECTION 1 TAPE HEAD DESCRIPTION

1.1 Description

The HSD2000 XS II Tape Head (figure1) is designed to apply Intertape brand pressure sensitive carton sealing tape to the top and bottom center seam of regular slotted corrugated cartons. It is easy to set-up and to operate. The model shown in this manual is a standard, 2" wide Tape Head. Also available is the mirror model, 2 or 3" wide.

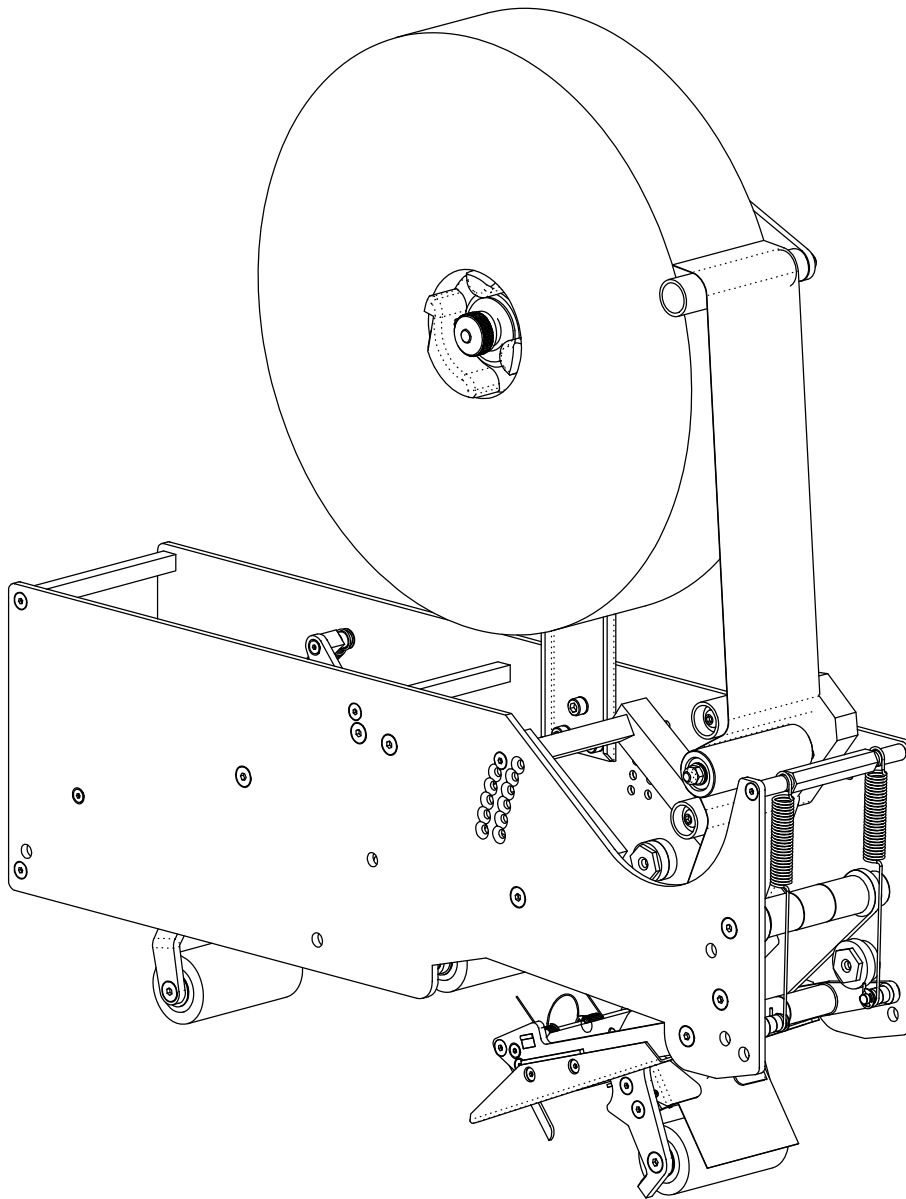


Figure 1

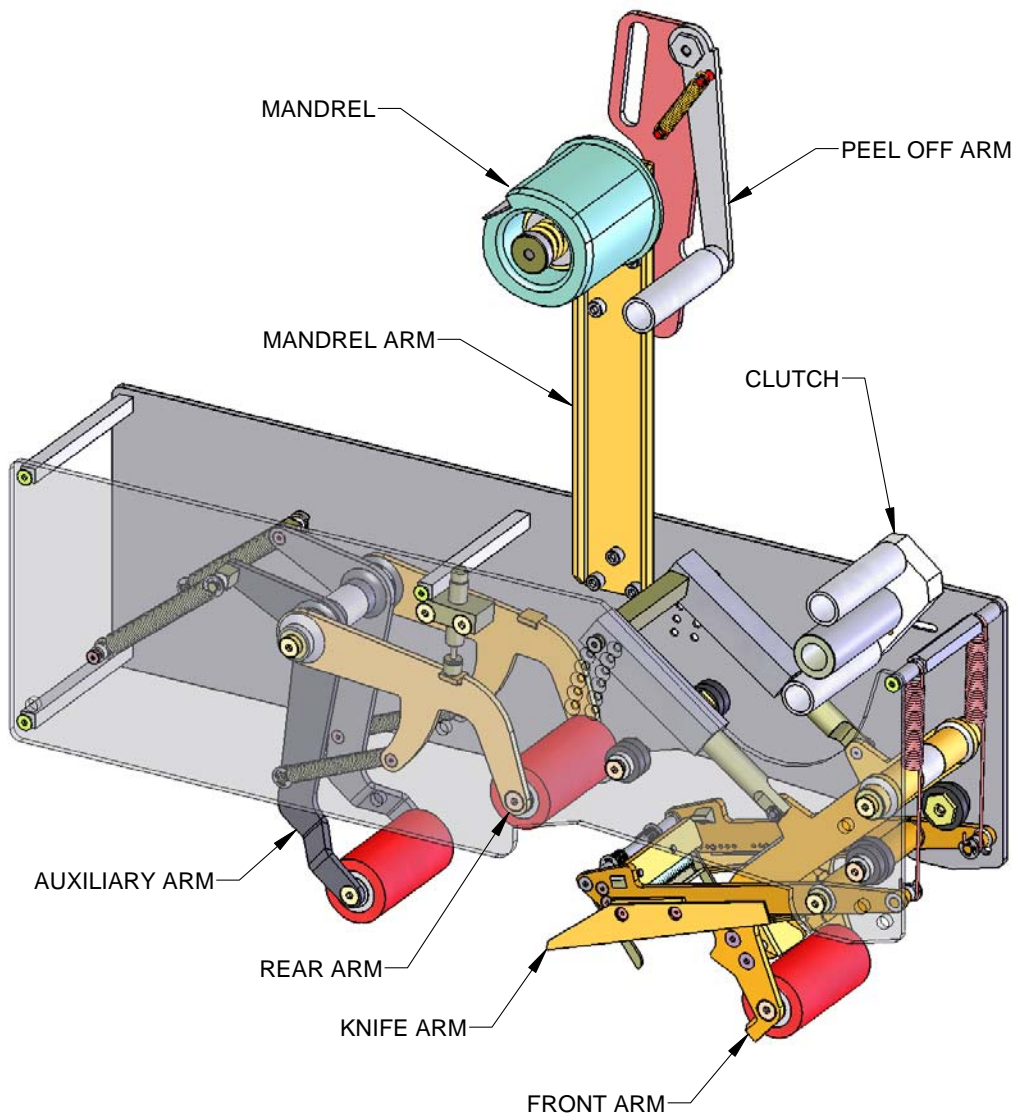


Figure 2

1.2 How the Tape Head Works – Figure 2

When the operator installs a new tape roll on the mandrel, the Tape Head is ready to operate. The tape leg catches the front side of the incoming carton. The tape is then applied to the top or bottom of the carton with pressure given by the front arm. When the carton's rear edge advances passed the front and knife arms, the knife arm snaps back out and cuts the tape. Finally, the rear arm applies pressure to the rear leg to seal the back of the carton.

SECTION 2 SAFETY

2.1 Safety Rules

The Tape Head has been designed to be extremely safe for operators and bystanders. Nevertheless, accident can happen. Therefore, it is important to follow safe work practice. The operator must read and follow these safety rules when working on or near the device.

- **Read this manual and its safety instructions thoroughly before operating.**
- **Only trained personnel are to operate, adjust or service the equipment.**
- **Shut off machine in case of emergency.**
- **Never wear loose clothing, jewels or tie when operating machine.**
- **Wear safety glasses.**
- **All covers and guards must be in place before operating.**
- **Stay clear of moving parts which may shear and cut.**
- **Never operate the Tape Head with the knife flipper guard removed.**
- **Do not modify the equipment in any way. Unauthorized modification may impair the function and/or safety and could affect the life of the equipment.**
- **Carefully read all safety decals on the Tape Head. If they are damaged and become illegible, replace them immediately. (See section 2.2, figure 4 for safety decal location).**
- **Use caution when handling knife. Knife blade is very sharp. Do not touch blade with bear hand.**

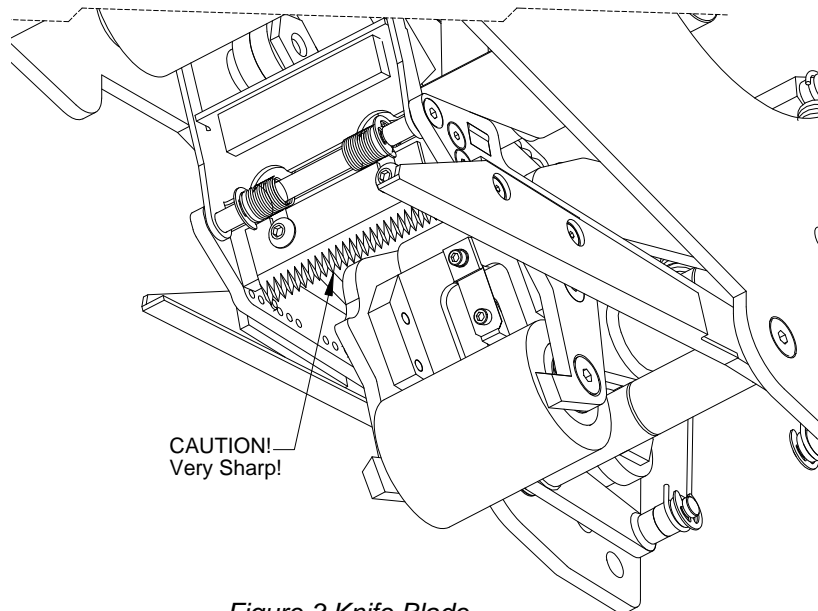


Figure 3 Knife Blade

2.2 Safety Decal Location – Figure 4

The figure below shows where the safety decal is located on the equipment. Replace decal if it is absent or becomes illegible. Replacement decals can be found in the Parts section of this manual.

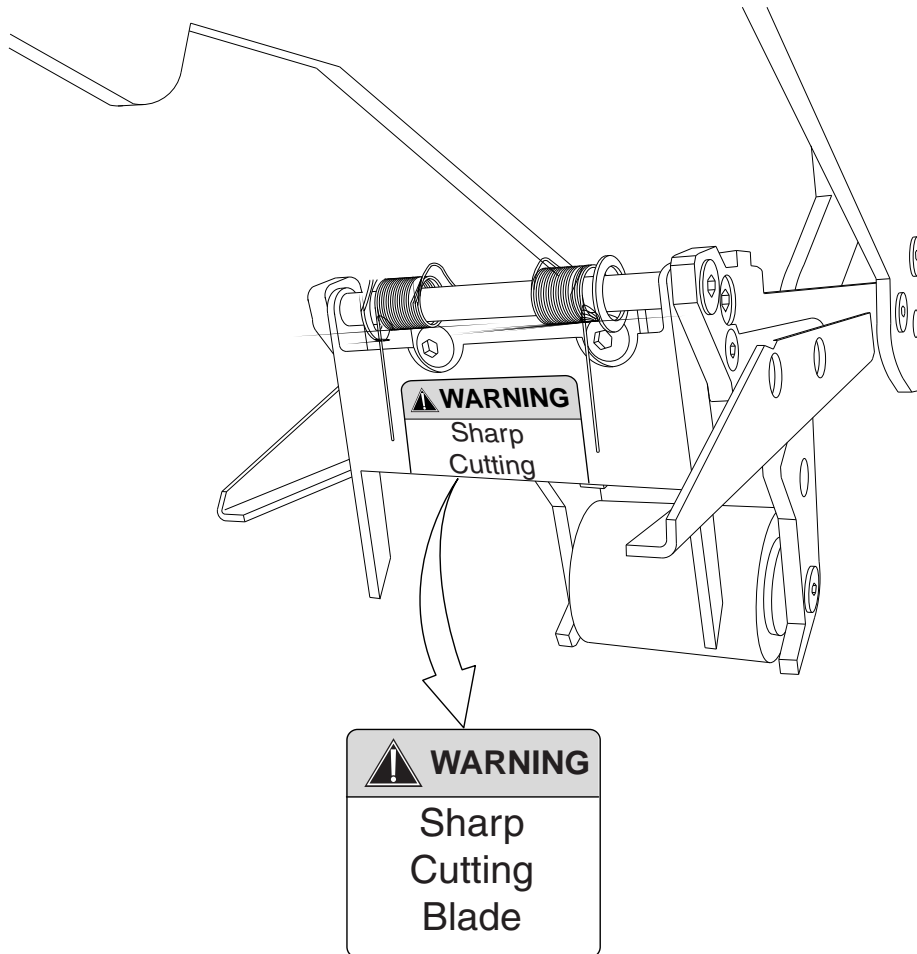


Figure 4 Safety Decal Location

SECTION 3 SPECIFICATIONS

3.1 Overall Dimensions

Figure 5 shows the overall dimensions of the Tape Head.

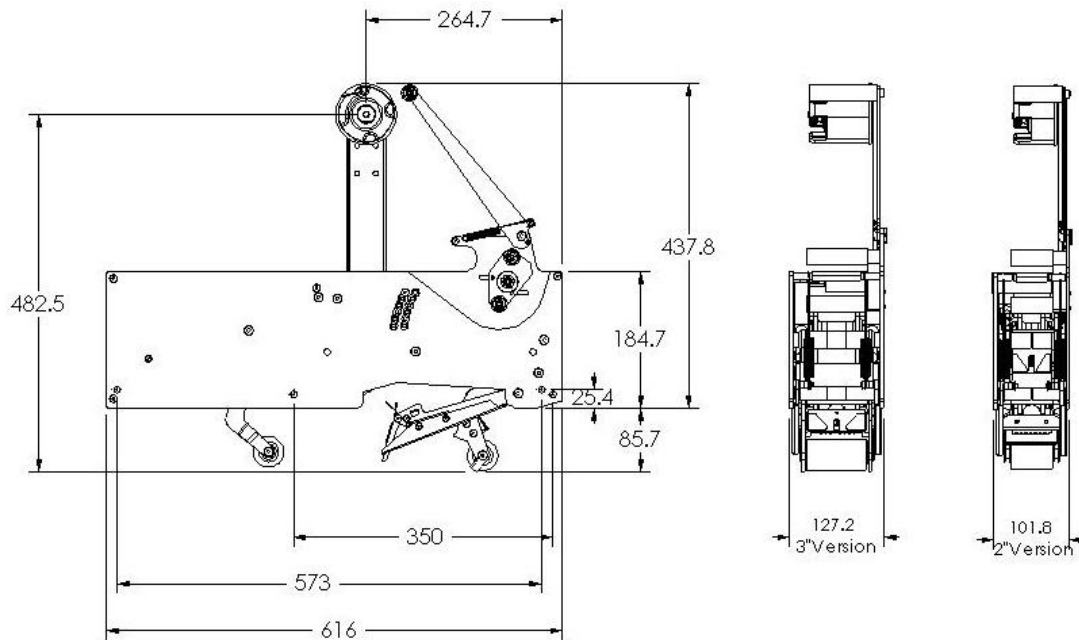


Figure 5 Overall Dimensions

3.2 Weight

Tape Head weight when shipped:

2" model: 37 lbs. (16.8 Kg)

3" model: 40 lbs. (18.2 Kg)

3.3 Tape Requirements

Type: Intertape brand Pressure Sensitive Carton Sealing Tape.

Width: 1 ½ to 2 inch wide tape maximum for the 2" model

2 ½ to 3 inch wide tape for the 3" model

Tape roll diameter: Maximum of 16 inches

Tape Application Leg Length: From 2 3/8" to 2 ¾"

THIS PAGE IS LEFT BLANK INTENTIONALLY

SECTION 4 SET-UP

4.1 Receiving and Handling

After unpacking the tape head, look for any damage that may have occurred during shipping. Should the equipment be damaged, file a claim with the transport company and notify your Intertape representative.

4.2 Tape Loading

Push the tape roll onto the mandrel with the adhesive side up until the core seats against the mandrel flange. This insures that the tape roll is aligned when feeding into the Tape Head.

4.3 Tape Threading – figure 6

Figure 6 shows how the tape must be threaded. You can also refer to the diagram on the Tape Head plate for threading instructions. The blade guard must be removed prior to operate the equipment. Use a knife to cut tape leg.

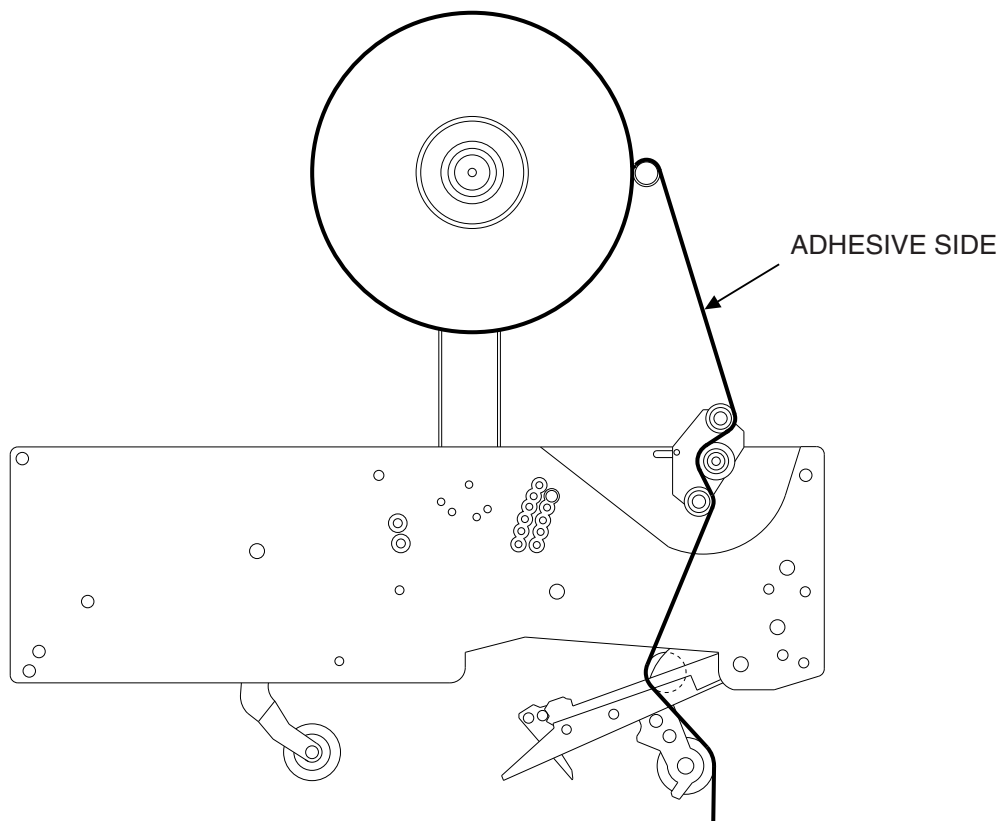


Figure 6 Tape Threading

CAUTION! Blade is very sharp! Do no handle with bear hands. Use gloves to handle blade.

4.4 Tape Centering – figure 7

Should the tape require centering, the tape mandrel can be adjusted in and out. First loosen the 1" hex jam nut, then adjust the shaft in or out as required using a flat screwdriver. When the tape is centered, tighten the jam nut.

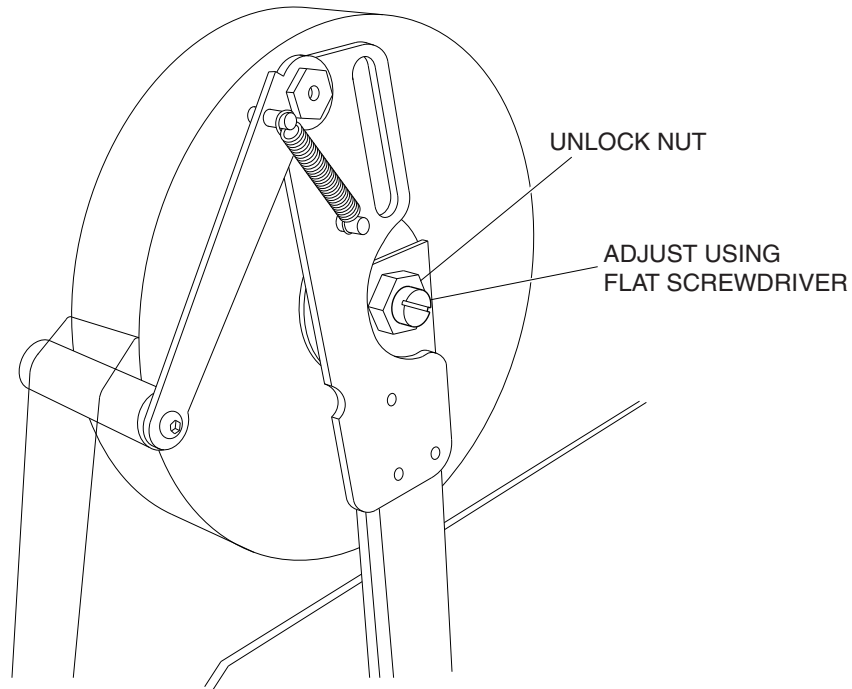


Figure 7 Tape Centering

4.5 Mandrel Tension Adjustment

The mandrel should be adjusted with little tension. It is important for the mandrel to turn freely. To adjust, loosen the mandrel jam nut as shown in figure 8.

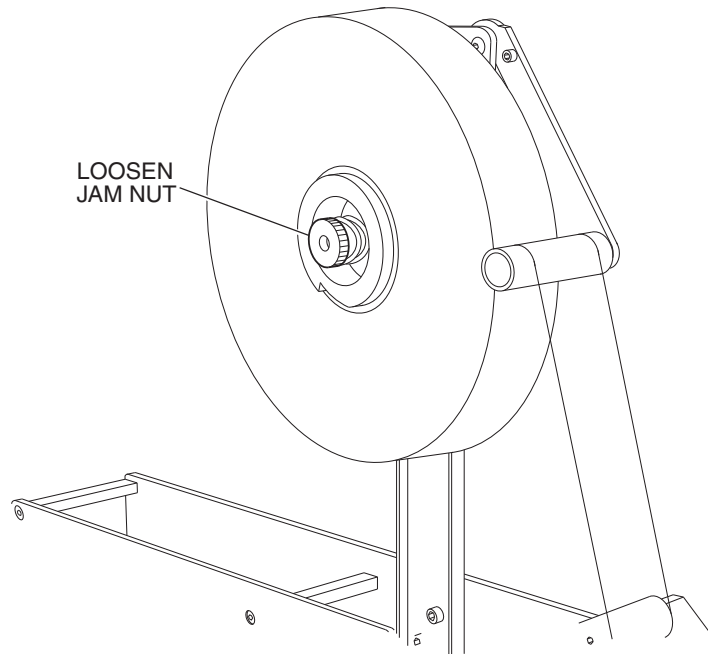


Figure 8 Mandrel Tension Adjustment

4.6 Clutch PTFE Roller Tension Adjustment

The clutch PTFE roller should be adjusted for very little tension. Use lock-nut to adjust tension as shown in figure 9.

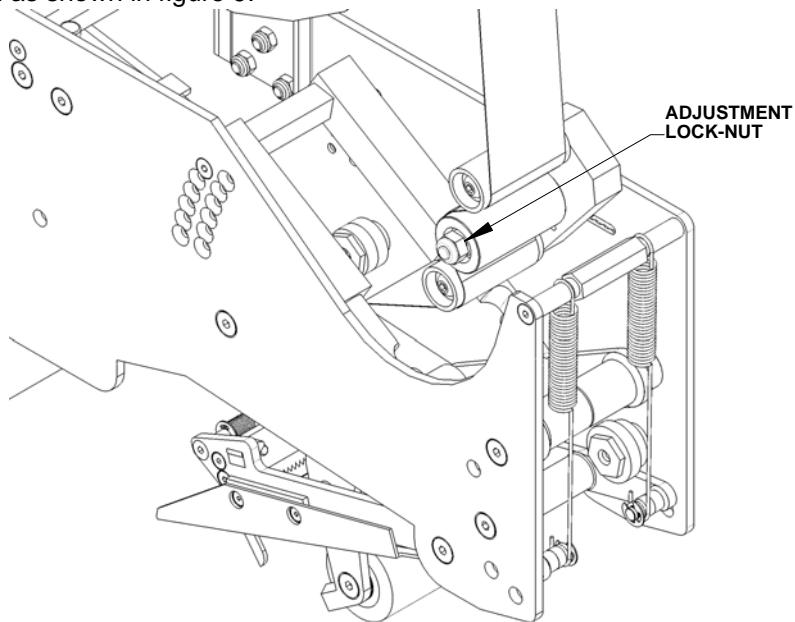


Figure 9 Clutch PTFE Roller Tension Adjustment Lock-nut

4.7 Front Leg Length Adjustment – Figure 10

To adjust the length of the front leg, slide the clutch forward or backward until leg length is satisfactory. **To move the clutch, first loosen the two adjustment screws as shown below. Retighten screws once clutch is adjusted.**

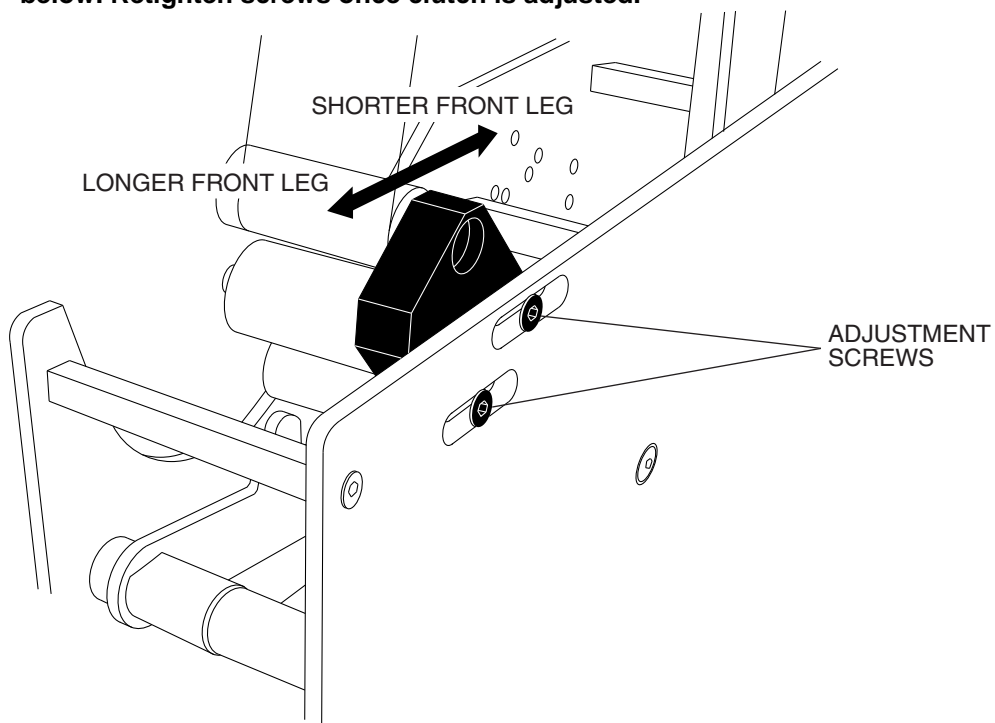


Figure 10 Front Leg Length Adjustment

4.8 Rear Leg Length Adjustment – Figure 11

To adjust the length of the rear leg, remove the four (4) knife arm screws and adjust length by moving the knife arm forward or backward, as shown in figure 11.

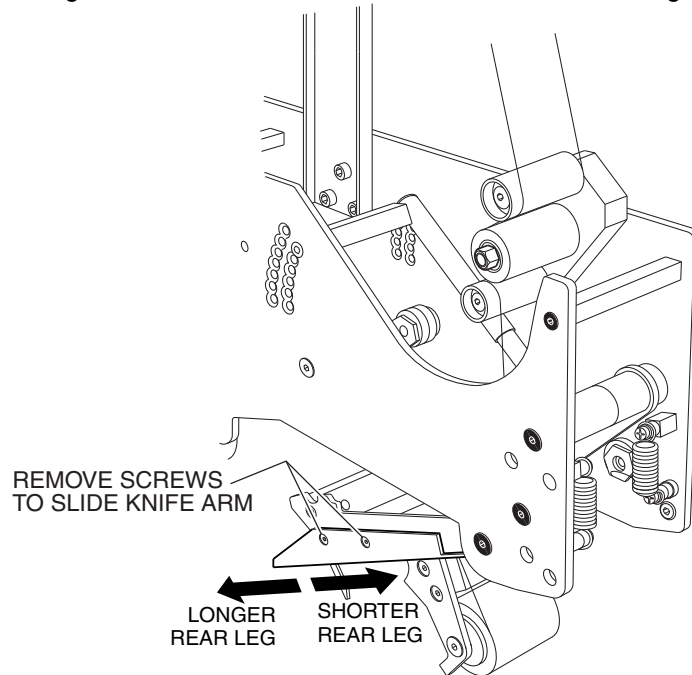


Figure 11 Rear Leg Length Adjustment

4.9 Front Arm Compression Spring Tension Adjustment.

This adjustment is done to insure gradual reduction in force as the roller travels up the end panel to eliminate carton crushing and dog earring as the roller arm travels around the corner to the center seam. There are two sets of adjustment holes, one for less pressure and one for more. The pressure (or force) can also be adjusted by moving the adjustment screw up or down as shown in figure 12.

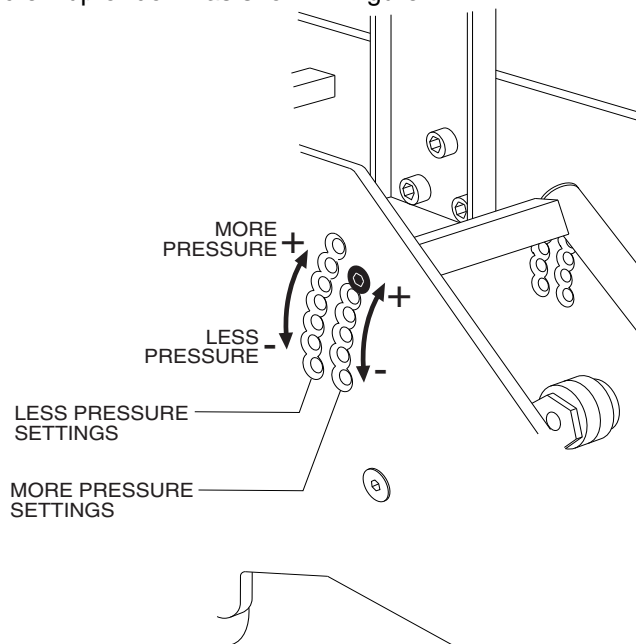


Figure 12 Compression Spring Tension Adjustments

4.10 Blade Replacement – Figure 13

To replace the blade:

1. Open the blade flipper guard
2. Remove the two (2) blade screws
3. Remove and replace the blade. Make sure the flat part of the blade is facing the back plate
4. Make sure the blade flipper guard is back in place

CAUTION! Blade is very sharp! Do not handle with bare hands. Use gloves to handle blade.

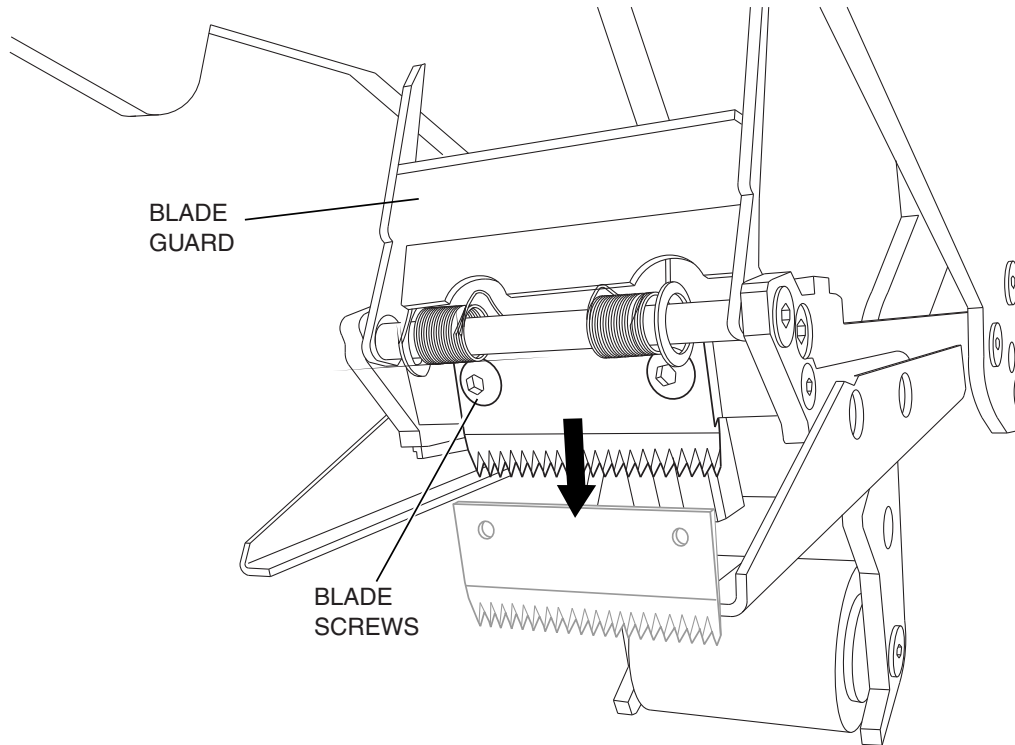


Figure 13 Blade Replacement

THIS PAGE IS LEFT BLANK INTENTIONALLY

SECTION 5 MAINTENANCE

- The Tape Head requires minimum maintenance. Simply replace the blade regularly to insure clean tape legs.
- A small amount of silicone base grease is required inside the compression springs (item 5, page 32).

SECTION 6 TROUBLESHOOTING

PROBLEM	POSSIBLE CAUSE AND SOLUTION
Rear leg stretched or not cut	Blade does not cut. Replace blade.
Rear leg is not properly wiped down	Carton feeds too fast. Slow down carton feed.
	Dirt on rear arm causing friction. Clean or replace roller.
Dog ears on carton	Lower pressure by adjusting tension on front arm compression springs as shown in paragraph 4.9.

SECTION 7 RECOMMENDED SPARE PARTS

2" Model:

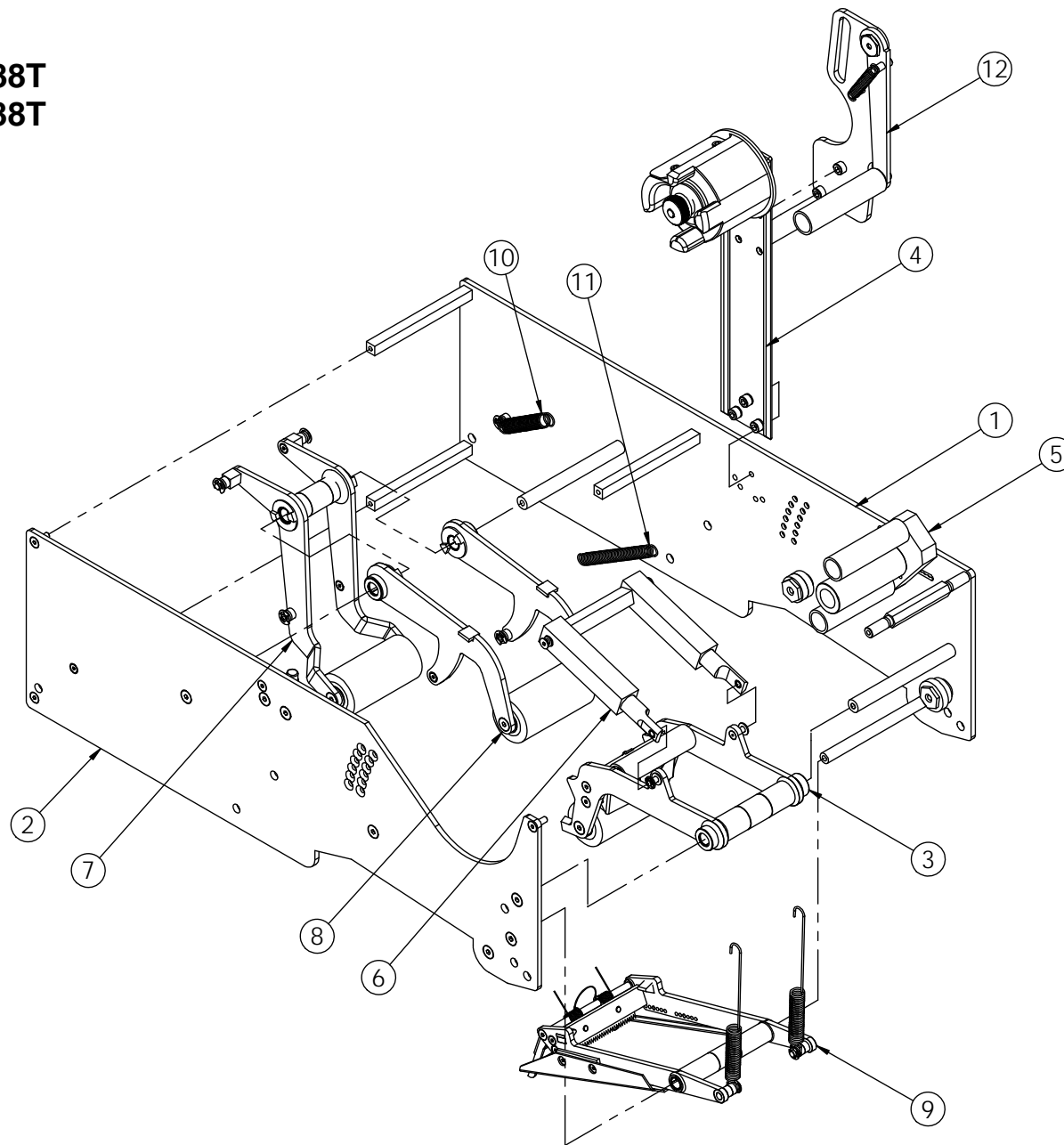
PART NUMBER	DESCRIPTION	QTY
UPH022	MANDREL SPRING	1
UPH0775	ROLLER SHELL ETM	3
UPH107	HIGH SPEED BLADE 2"	1
UPH133	STOP,KNIFE ARM,15/16"D.URETH.	6
UPH134	STOP,MAIN,1 1/8 "D.URETH.	2
UPH3704	HX II AUXILIARY EXT. SPRING	2
UPH3729	HX II KNIFE GUARD SPRING	1
UPH4666	COMP SPRING 15 OD 1.5 WD 57 LG	2
UPH7421	EXTENSION SPRING KNIFE ARM	2
UPI0067	BLADE CLEANER ETM II	1
UPM2206	EXTENTION SPRING FLOATING 222	2

3" Model:

PART NUMBER	DESCRIPTION	QTY
UPH022	MANDREL SPRING	1
UPH0966	ROLLER SHELL ETM 3"	3
UPH108	HIGH SPEED 3" BLADE	1
UPH133	STOP,KNIFE ARM,15/16"D.URETH.	6
UPH134	STOP,MAIN,1 1/8 "D.URETH.	2
UPH3704	HX II AUXILIARY EXT. SPRING	2
UPH3729	HX II KNIFE GUARD SPRING	1
UPH4666	COMP SPRING 15 OD 1.5 WD 57 LG	2
UPH7421	EXTENSION SPRING KNIFE ARM	2
UPI0068	BLADE CLEANER ETM II 72MM	1
UPM2206	EXTENTION SPRING FLOATING 222	2

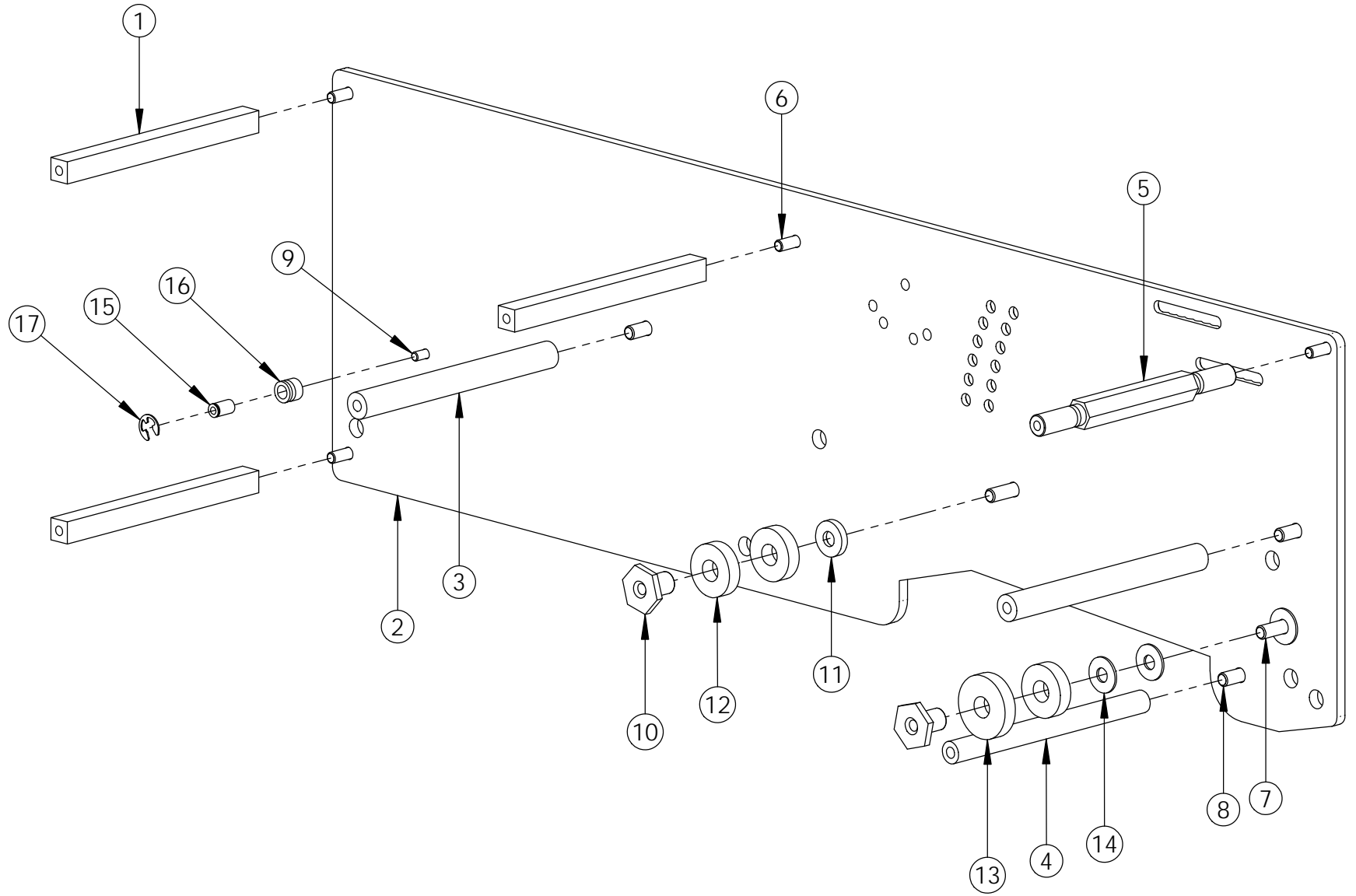
SECTION 8 - SUB ASSEMBLIES

2" MODEL UH088T
3" MODEL UH588T



ITEM	PART #	DESCRIPTION	2"/QTY. UH088T	3"/QTY. UH588T
1	USH7027	MAIN FRAME 2"	1	-
1	USH7028	MAIN FRAME 3"	-	1
2	USH1019	COVER FRAME HX II	1	1
3	USH0942	FRONT ARM ASSEMBLY	1	-
3	USH0943	FRONT ARM ASSEMBLY	-	1
4	USH0624	MANDREL ASS'Y	1	-
4	USH0623	MANDREL ASS'Y	-	1
5	USH0941	CLUTCH ASS'Y 2"	1	-
5	USH0940	CLUTCH ASS'Y 3"	-	1
6	USH0948	REPULSIVE PIVOT ASS'Y 2"	1	-
6	USH0949	REPULSIVE PIVOT ASS'Y 3"	-	1
7	USH0950	AUXILIARY ARM ASS'Y 2"	1	-
7	USH0951	AUXILIARY ARM ASS'Y 3"	-	1
8	USH3840	REAR ARM ASS'Y 2"	1	-
8	USH3841	REAR ARM ASS'Y 3"	-	1
9	USH1020	KNIFE ARM	1	-
9	USH1021	KNIFE ARM	-	1
10	UPH3704	EXTENSION SPRING	2	2
11	UPM2206	EXTENSION SPRING	2	2
12	USH7029	PEEL OFF ARM ASS'Y 2"	1	-
12	USH7030	PEEL OFF ARM ASS'Y 3"	-	1

2" MODEL USH7027
3" MODEL USH7028

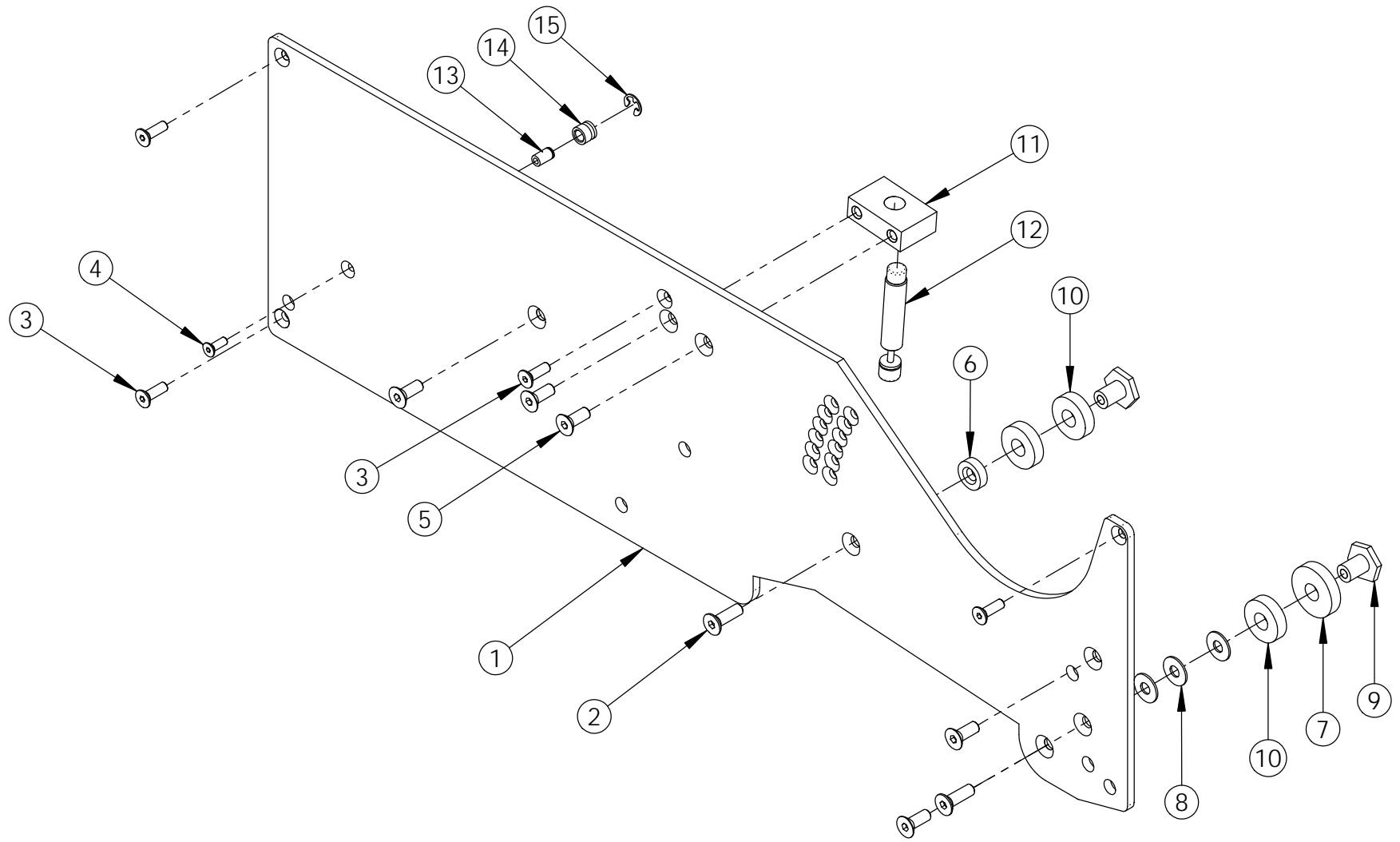


UH088T/UH588T

UDH10002-01

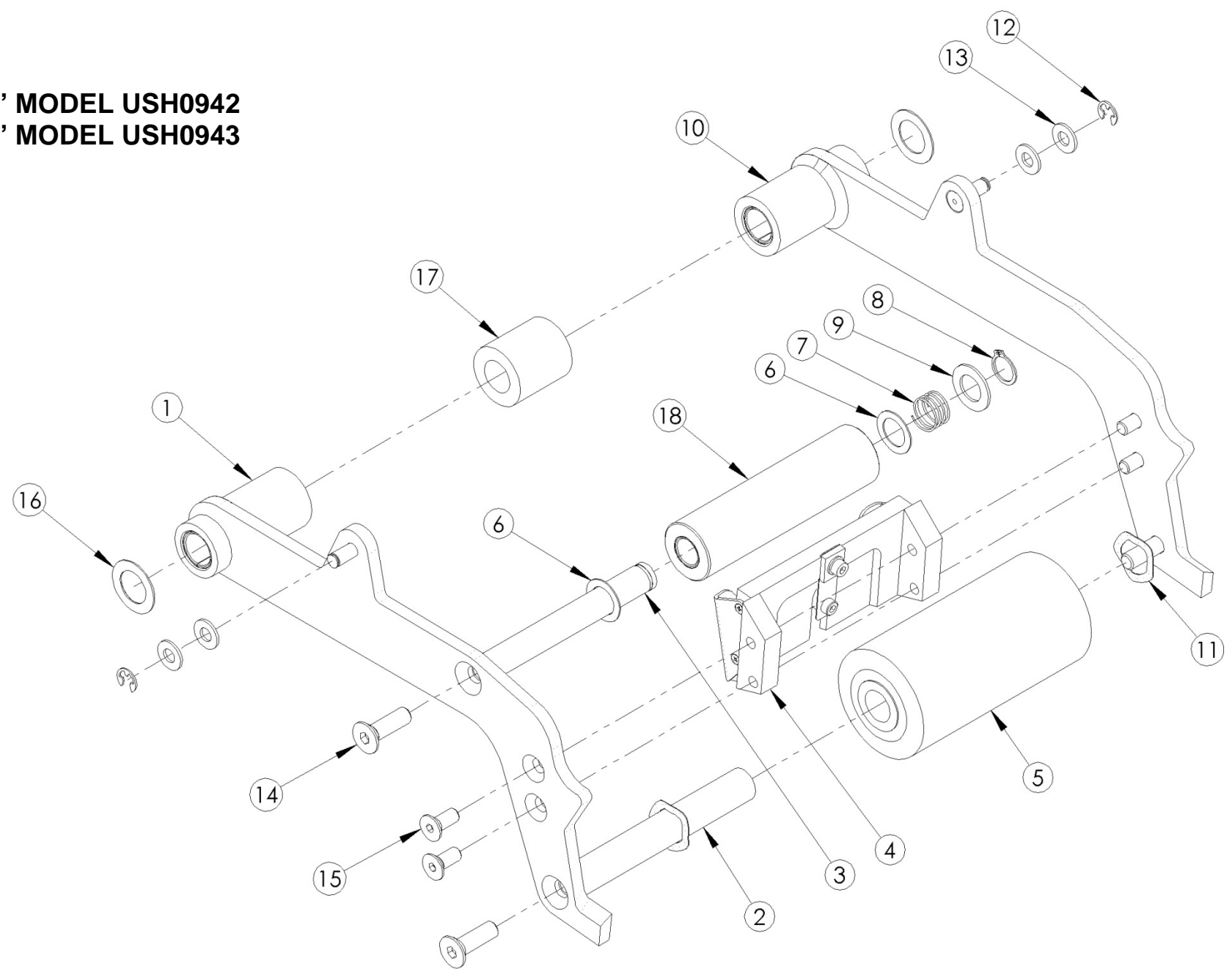
ITEM	PART #	DESCRIPTION	2"/QTY. USH7027	3"/QTY. USH7028
1	UPH4527	SPACER BAR	3	-
1	UPH4526	SPACER BAR	-	3
2	UPH7390	MAIN FRAME	1	1
3	UPH4530	PIVOT SHAFT	2	-
3	UPH4528	PIVOT SHAFT	-	2
4	UPH4531	PIVOT SHAFT	1	-
4	UPH4529	PIVOT SHAFT	-	1
5	UPH4535	SPRING, SPACER BAR HX - II	1	-
5	UPH4536	SPRING, SPACER BAR HX - II	-	1
6	UF5404	FHCS M5 - 0.8 x 16 mm	4	4
7	UF5402	FHCS M6 - 1 x 20	2	2
8	UF1192	FHCS M6-1 x 16 mm	3	3
9	UF3714	FHCS M4-0.7 x 12mm	1	1
10	UPH4523	STOP RETAINER HX	2	2
11	UPH4522	MAIN STOP SPACER	1	1
12	UPH133	STOP, URETHANE KNIFE ARM	3	3
13	UPH134	STOP, URETHANE KNIFE ARM	1	1
14	UF6391	F.W. 6 x 16 x 1 mm	3	3
15	UPH4532	AUX. ARM'S SPRING RETAINER	1	1
16	UPH0877	RETAINER SLEEVE	1	1
17	UF6398	EXT. RETAINING RING, 6mm SHAFT	1	1

USH1019



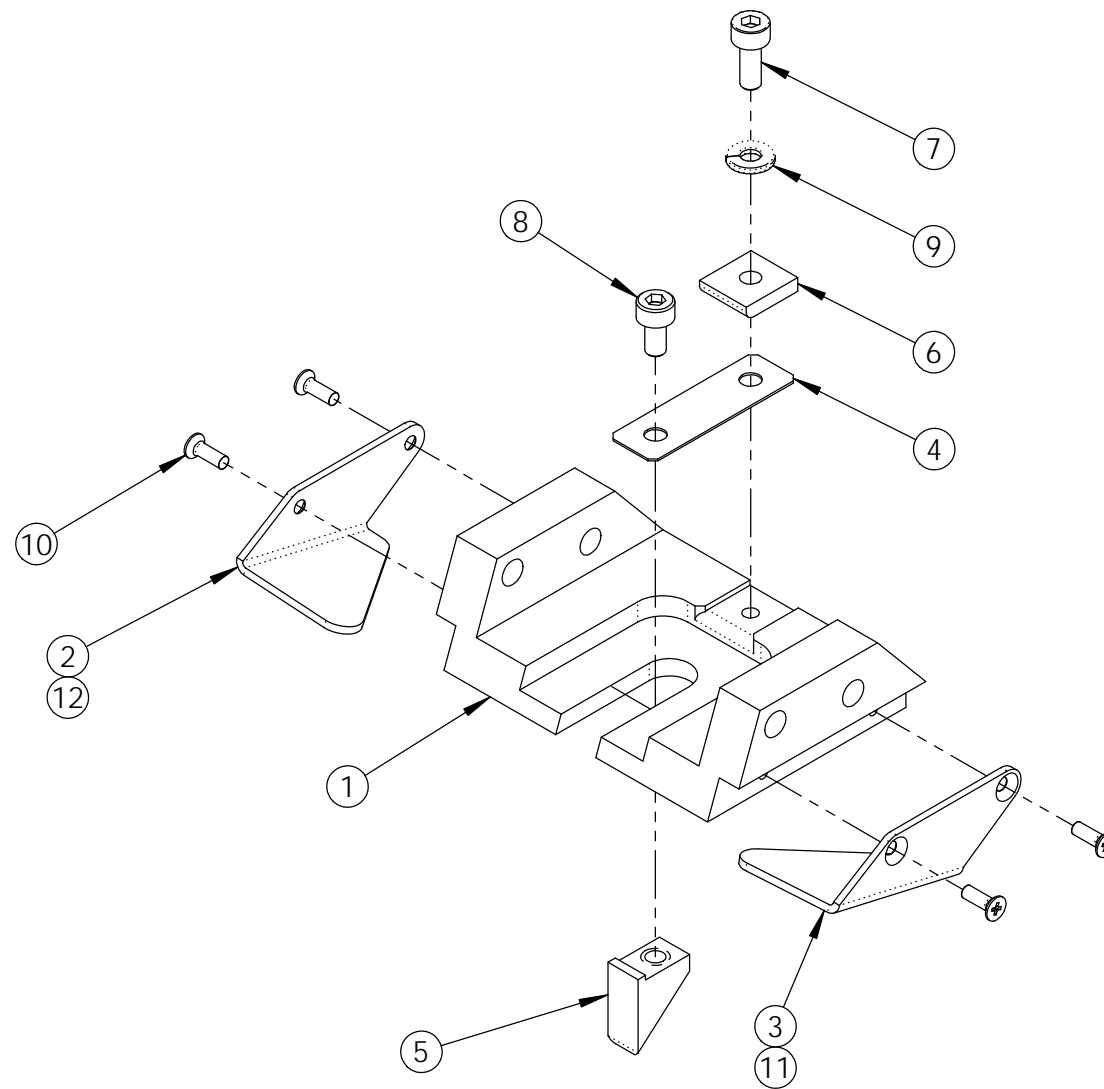
ITEM	PART #	DESCRIPTION	QTY.
1	UPH4524	COVER FRAME HX II	1
2	UF5402	FHCS M6 - 1 x 20	2
3	UF5404	FHCS M5 - 0.8 x 16 mm	4
4	UF3714	FHCS M4-0.7 x 12mm	1
5	UF1192	FHCS M6-1 x 16 mm	5
6	UPH0082	MAIN STOP SPACER	1
7	UPH134	STOP, URETHANE KNIFE ARM	1
8	UF6391	F.W. 6 x 16 x 1 mm	3
9	UPH4523	STOP RETAINER HX	2
10	UPH133	STOP, URETHANE KNIFE ARM	3
11	UPH4534	SHOCK ABSORBER BRACKET	1
12	UPH4581	XS II SHOCK ABSORBER	1
13	UPH4532	AUX. ARM'S SPRING RETAINER	1
14	UPH0877	RETAINER SLEEVE	1
15	UF6398	EXT. RETAINING RING, 6mm SHAFT	1

2" MODEL USH0942
3" MODEL USH0943



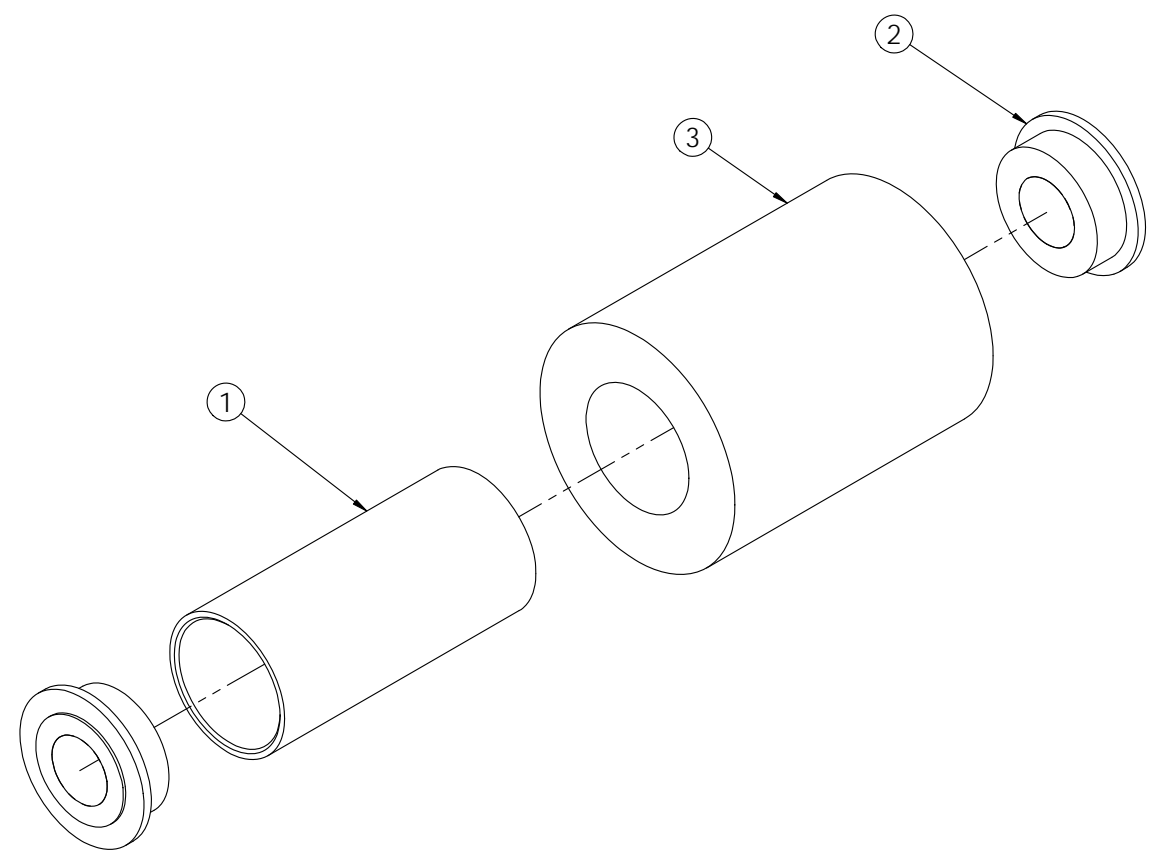
ITEM	PART #	DESCRIPTION	2" / QTY. USH0942	3" / QTY. USH0943
1	UAH0099	FRONT ARM RIGHT w BEARINGS	1	1
2	UPH4543	FRONT ROLLER SHAFT	1	-
2	UPH4544	FRONT ROLLER SHAFT	-	1
3	UPH0884	PTFE ROLLER SHAFT 48	1	-
3	UPH0968	PTFE ROLLER SHAFT 72	-	1
4	UAH0097	TAPE SHOE ASS'Y	1	-
4	UAH0098	TAPE SHOE ASS'Y	-	1
5	UAH0104	URETHANE ROLLER ASS'Y	1	-
5	UAH0103	URETHANE ROLLER ASS'Y	-	1
6	UF6389	NYLON F.W. 10.5 x 16 x 0.5 mm	2	2
7	UPH0281	SPRING - TAPE GUIDE ROLLER T.H.	1	1
8	UF6301	RETAINING RING FOR 10 mm SHAFT	1	1
9	UF1797	SS THRUST WASHER 10.1 x 17.3 x 1	1	1
10	UAH0100	FRONT ARM LEFT w BEARINGS	1	1
11	UPH0703	WAVE DISC SPRING	2	2
12	UF9161	EXTERNAL RETAINING RING 5 mm	2	2
13	UF3692	NYLON WASHER 5.3mm I.D.	4	4
14	UF5402	FHCS M6 - 1 x 20	3	3
15	UF5400	FHCS M5-0.8 x 12 mm	4	4
16	UF6335	F.W. PTFE, 12.5 x 20 x 0.55 mm	2	2
17	UPH4542	SPACER	-	1
18	UAH0074	GUIDE ROLLER W. BEARINGS 48	1	-
18	UAH0075	GUIDE ROLLER W. BEARINGS 72	-	1

2" MODEL UAH0097
3" MODEL UAH0098



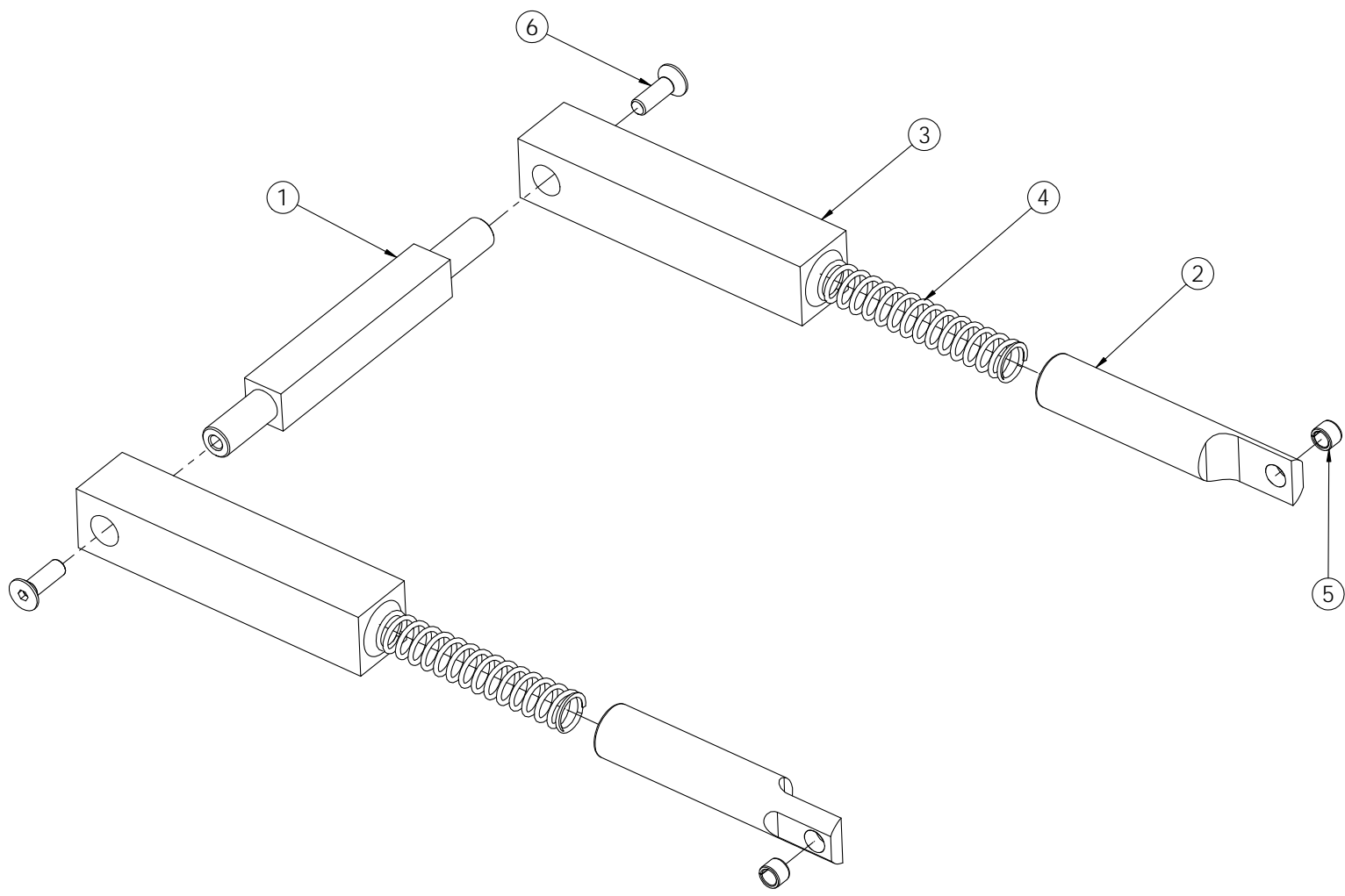
ITEM	PART #	DESCRIPTION	2" / QTY. UAH0097	3" / QTY. UAH0098
1	UPH4550	TAPE SHOE 2"	1	-
1	UPH4551	TAPE SHOE 3"	-	1
2	UPH4548	TAPE SHOE GUIDE RIGHT 2"	1	-
3	UPH3893	TAPE SHOE GUIDE LEFT 2"	1	-
4	UPH3706	SPRING BLADE	1	1
5	UPH0879	FINGER ETM	1	1
6	UPH0668	SQUARE WASHER Hi	1	1
7	UF6400	SHCS M3-0.5 x 8	1	1
8	UF3145	SS SHCS M3-0.5 x 6 mm	1	1
9	UF3718	M3 L.W.	1	1
10	UF5406	FHCS M2-0.4 x 6 mm	4	4
11	UPH0836	TAPE SHOE GUIDE L.H.	-	1
12	UPH0323	TAPE SHOE GUIDE R.H.	-	1

2" MODEL UAH0104
3" MODEL UAH0103



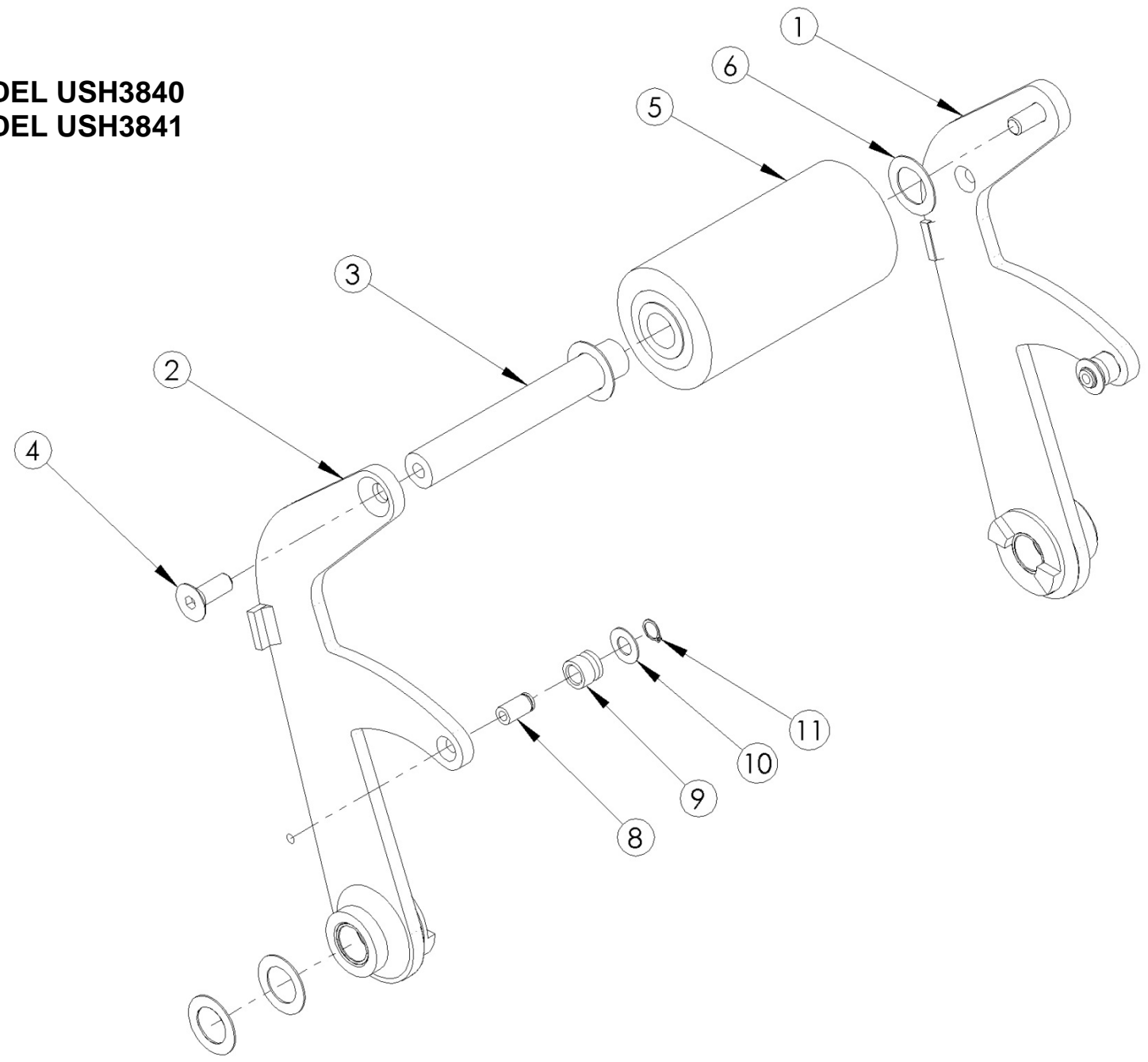
ITEM	PART #	DESCRIPTION	2"/QTY. UAH0104	3"/QTY. UAH0103
1	UPH4537	FRONT ROLLER CORE	1	-
1	UPH4538	ROLLER CORE	-	1
2	UPH4539	ROLER BEARING #1	2	2
3	UPE0199	XS II ROLLER SHELL 2"	1	-
3	UPE0198	XS II ROLLER SHELL 3"	-	1

2" MODEL USH0948
3" MODEL USH0949



ITEM	PART #	DESCRIPTION	2"/QTY. USH0948	3"/QTY. USH0949
1	UPH4554	PIVOT BAR	1	-
1	UPH4555	PIVOT ABOUT BAR	-	1
2	UPH4556	COMPRESSION SPRING PIN	2	2
3	UPH9009	COMPRESSION SPRING TUBING	2	2
4	UPH9010	COMP. SPRING .48 OD .055 WD 2.5 LG	2	2
5	UPH9200	BEARING, PLAIN 5 x 7 x 5 mm	2	2
6	UF5404	FHCS M5 - 0.8 x 16 mm	2	2

2" MODEL USH3840
3" MODEL USH3841



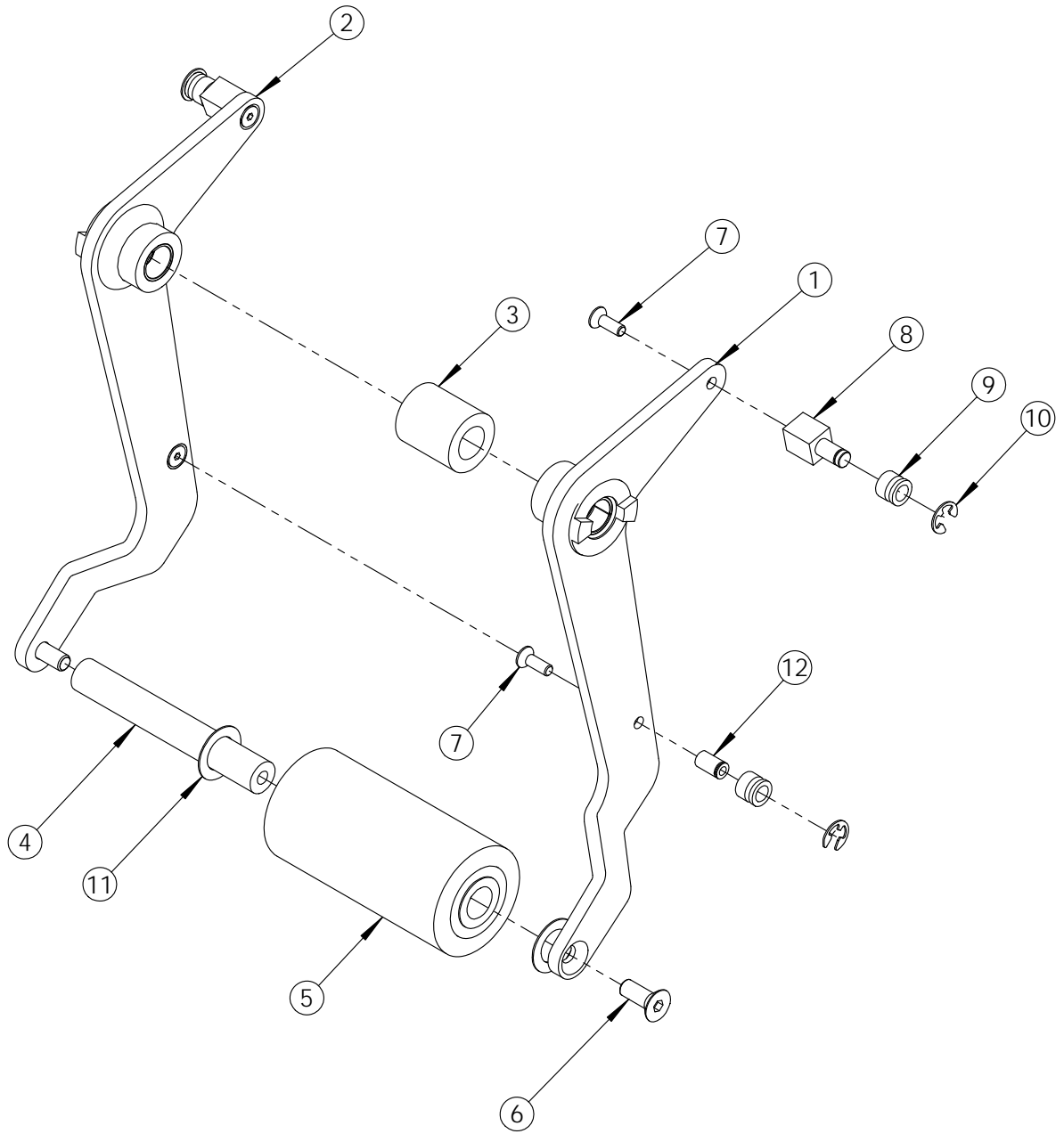
UH088T/UH588T

34

UDH10002-01

ITEM	PART #	DESCRIPTION	2"/QTY. USH3840	3"/QTY. USH3841
1	UAH0107	RIGHT REAR ARM WITH BEARINGS	1	1
2	UAH0108	LEFT REAR ARM WITH BEARINGS	1	-
3	UPH4544	FRONT ROLLER SHAFT	-	1
3	UPH4543	FRONT ROLLER SHAFT	1	-
4	UF1192	FHCS M6-1 x 16 mm	2	2
5	UAH0103	URETHANE ROLLER ASS'Y	-	1
5	UAH0104	URETHANE ROLLER ASS'Y	1	-
6	UF6335	F.W. PTFE, 12.5 x 20 x 0.55 mm	6	6
8	UPH4532	AUX. ARM'S SPRING RETAINER	2	1
9	UPH0877	RETAINER SLEEVE	2	1
10	UF4071	F. WASHER 6 x 12 x 0.5 SS	2	1
11	UF6302	RETAINING RING 6 mm	2	1

2" MODEL USH0950
3" MODEL USH0951



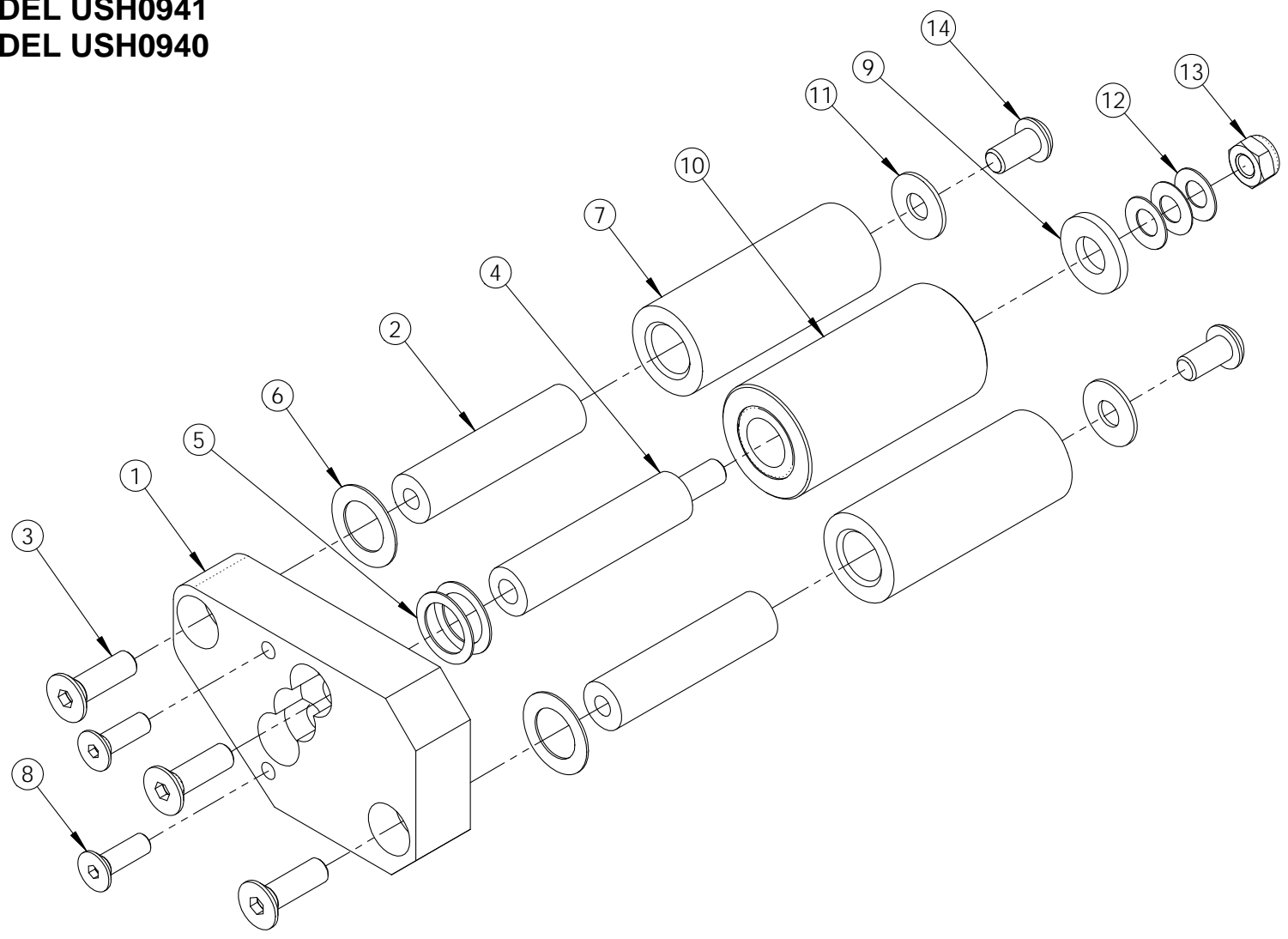
UH088T/UH588T

36

UDH10002-01

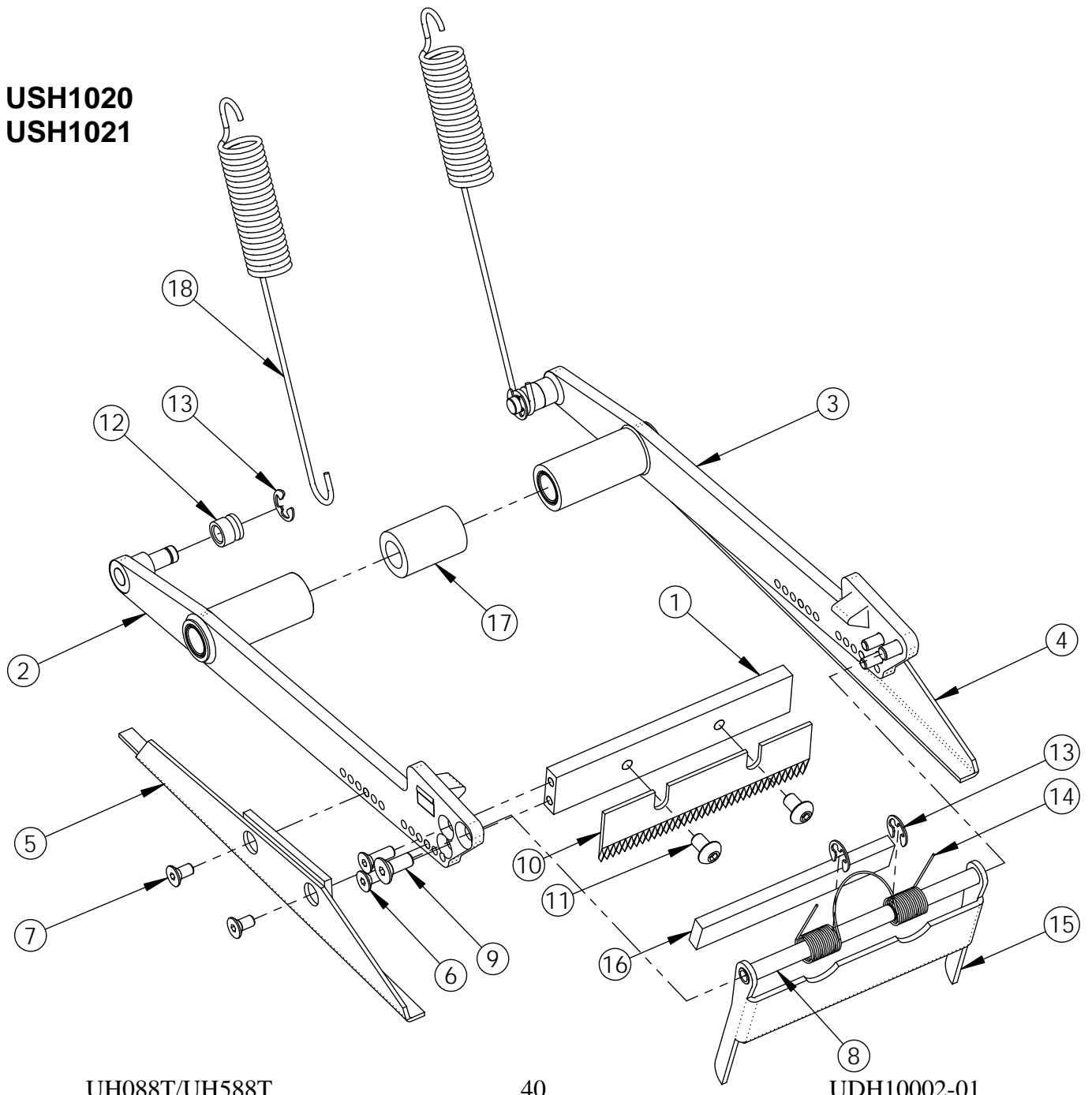
ITEM	PART #	DESCRIPTION	2"/QTY. USH0950	3"/QTY. USH0951
1	UAH0105	RIGHT AUXILLARY W. BEARING	1	1
2	UAH0106	LEFT AUXILLARY W. BEARING	1	1
3	UPH4542	SPACER	-	1
4	UPH4543	FRONT ROLLER SHAFT	1	-
4	UPH4544	FRONT ROLLER SHAFT	-	1
5	UAH0104	URETHANE ROLLER ASS'Y	1	-
5	UAH0103	URETHANE ROLLER ASS'Y	-	1
6	UF1192	FHCS M6-1 x 16 mm	2	2
8	UPH4561	SPRING RETAINER #2 Hi	2	2
9	UPH0877	RETAINER SLEEVE	4	4
10	UF6302	RETAINING RING 6 mm	4	4
11	UF6335	F.W. PTFE, 12.5 x 20 x 0.55 mm	2	2
12	UPH4532	AUX. ARM'S SPRING RETAINER	2	2
13	UF4071	F. WASHER 6 x 12 x 0.5 SS	4	4

2" MODEL USH0941
3" MODEL USH0940



ITEM	PART #	DESCRIPTION	USH0941 2" / QTY.	USH0940 3" / QTY.
1	UPH4576	CLUTCH BRACKET	1	1
2	UPH0949	GUIDE ROLLER SHAFT	-	2
2	UPH0887	GUIDE ROLLER SHAFT	2	-
3	UF5402	FHCS M6 - 1 x 20	3	3
4	UPH1254	CLUTCH SHAFT	-	1
4	UPH1028	CLUTCH SHAFT	1	-
5	UF6402	F.W. PTFE, 12.5 x 17.5 x 0.5 mm	2	2
6	UF6335	F.W. PTFE, 12.5 x 20 x 0.55 mm	2	2
7	UPH0950	GUIDE ROLLER ETM	-	2
7	UPH0888	GUIDE ROLLER ETM	2	-
9	UF6346	FW M8 NARROW	1	1
10	UAH0030	CLUTCH w. BEARINGS 72	-	1
10	UAH0029	CLUTCH W. BEARINGS 48	1	-
11	UF6391	F.W. 6 x 16 x 1 mm	2	2
12	UF1870	BELLEVILLE W. 0.26 x 0.5 x .036	3	3
13	UF5900	NYLON LOCK NUT M6-1.0	1	1
14	UF1195	BHCS M6-1 x 12 mm	2	2
15	UF3721	FHCS M5-0.8 x 20mm	2	2

2" MODEL USH1020
3" MODEL USH1021

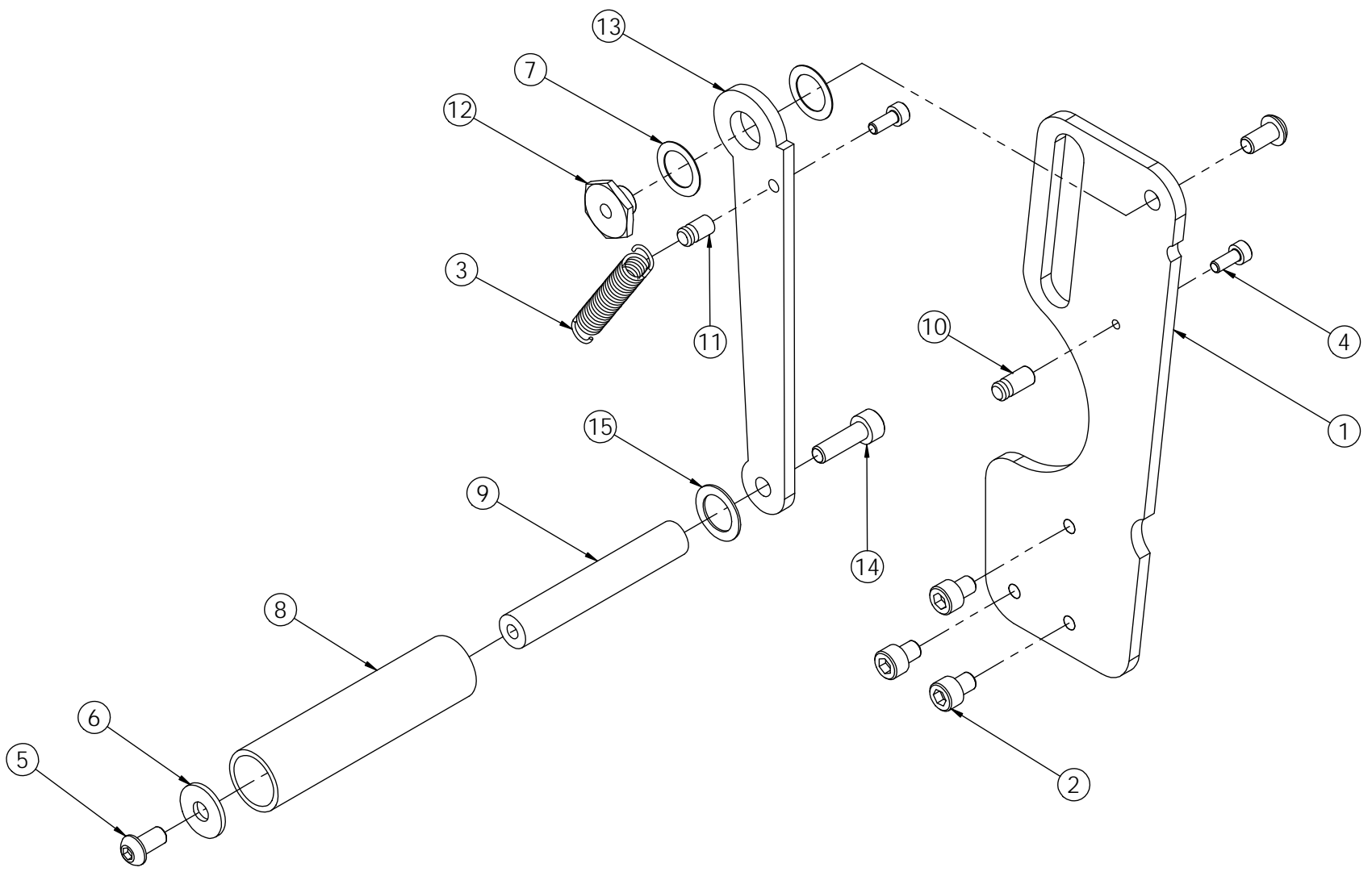


UH088T/UH588T

UDH10002-01

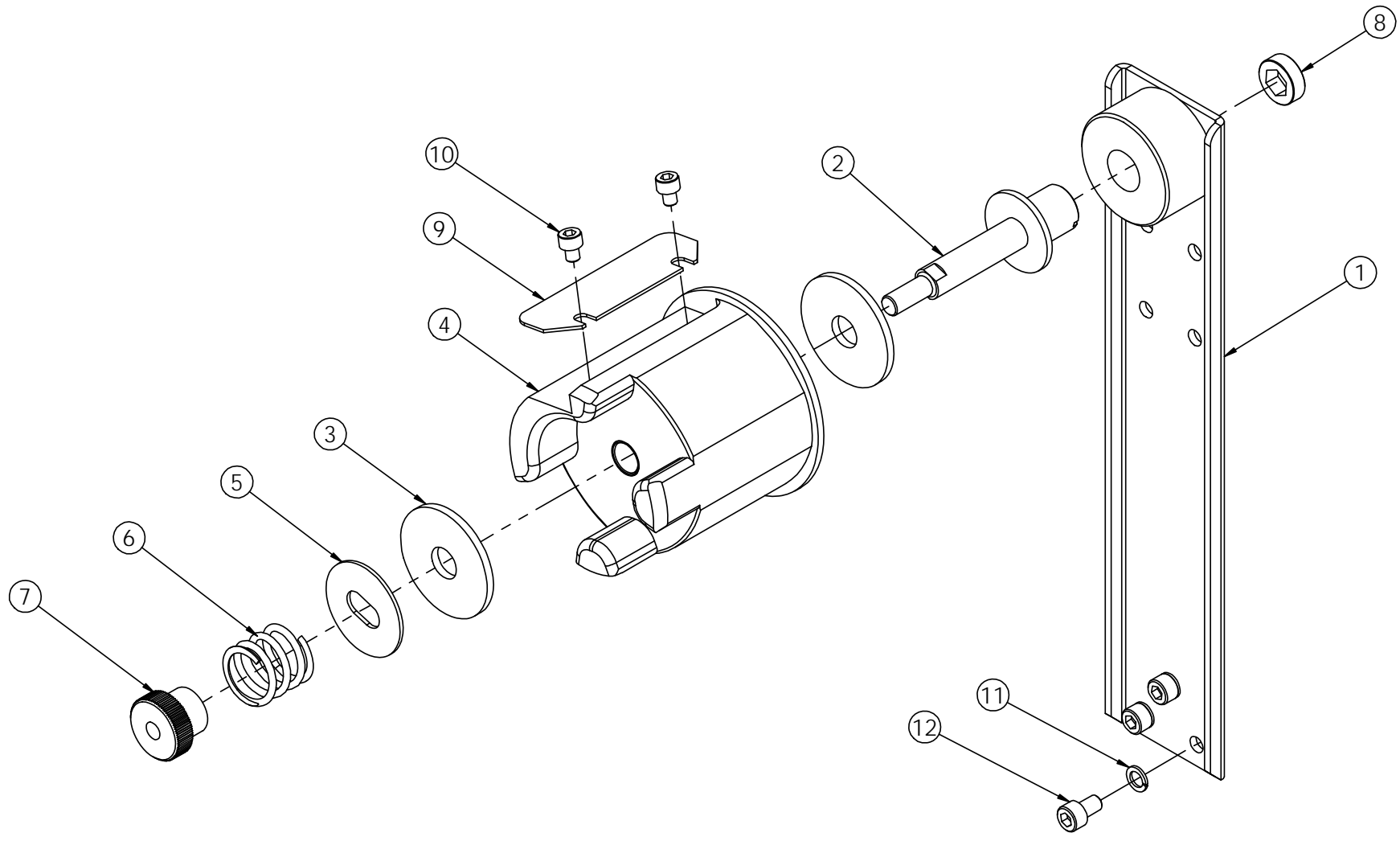
ITEM	PART #	DESCRIPTION	2" / QTY. USH1020	3" / QTY. USH1021
1	UPH4570	KNIFE SUPPORTS	1	-
1	UPH4571	KNIFE SUPPORTS	-	1
2	UAH0109	KNIFE ARM RIGHT WITH BEARING	1	1
3	UAH0110	KNIFE ARM LEFT WITH BEARINGS	1	1
4	UPH4563	KNIFE ARM EXTENSION LEFT	1	1
5	UPH4562	KNIFE ARM EXTENSION RIGHT	1	1
6	UF3714	FHCS M4-0.7 x 12mm	4	4
7	UF3274	SS FHCS M4-0.7 x 8 mm	4	4
8	UPH4567	KNIFE GUARD SHAFT	1	-
8	UPH4566	KNIFE GUARD SHAFT	-	1
9	UF3282	SS FHCS M5-0.8 x 12 mm	2	2
10	UPH107	KNIFE BLADE	1	-
10	UPH108	KNIFE BLADE	-	1
11	UF7010	SS BHCS M5 - 0.8 x 8 mm	2	2
12	UPH0877	RETAINER SLEEVE	2	2
13	UF6398	EXT. RETAINING RING, 6mm SHAFT	4	4
14	UPH3729	HX II KNIFE GUARD SPRING	1	1
15	UPH4568	KNIFE FLIP GUARD	1	-
15	UPH4569	KNIFE FLIP GUARD	-	1
16	UPI0067	BLADE CLEANER	1	-
16	UPI0068	BLADE CLEANER	-	1
17	UPH1277	SPACER	-	1
18	UPH7421	EXTENSION SPRING	2	2

2" MODEL USH7029
3" MODEL USH7030



ITEM	PART #	DESCRIPTION	2"/QTY. USH7029	3"/QTY. USH7030
1	UPH7389	PEEL OFF MAIN ARM PLATE	1	1
2	UF0810	SHCS M6-1 x 8	3	3
3	UPH0693	KNIFE ARM SPRING	1	1
4	UF9148	SHCS M4-0.7 x 10mm	2	2
5	UF3278	SS BHCS M6-1 x 12 mm	2	2
6	UF1828	REG F.W. M6	1	1
7	UF1960	NYLON F.W. .515 x .759 x .015	2	2
8	UPI0061	PEEL OFF ROLLER ET 48	1	-
8	UPI0070	PEEL OFF ROLLER ET 72	-	1
9	UPH0887	GUIDE ROLLER SHAFT	1	-
9	UPH0949	GUIDE ROLLER SHAFT	-	1
10	UPH0399	MAIN ARM PLATE SPRING RETAINER	1	1
11	UPH0400	ARM PLATE SPRING RETAINER	1	1
12	UPH3827	PEEL-OFF ARM PIVOT	1	1
13	UPH0655	PEEL OFF ARM PLATE	1	1
14	UF0835	SHCS M6-1 X 20mm	1	1
15	UF6336	F.W. PTFE, 13 x 19 x 1 mm	1	1

2" MODEL USH0624
3" MODEL USH0623



UH088T/UH588T

UDH10002-01

ITEM	PART #	DESCRIPTION	2"/QTY. USH0624	3"/QTY. USH0623
1	UAH0093	MANDREL ARM SUB ASS'Y	1	1
2	UPH3762	SHAFT, MANDREL ETII TW 2"	1	-
2	UPH3768	SHAFT, MANDREL ETII TW 3"	-	1
3	UF1920	FIBRE WASHER 1/2 x 1-3/4 x 1/8	2	2
4	UAH0072	MANDREL ET TW 48 w BEARINGS	1	-
4	UAH0073	MANDREL ET TW 72 w BEARINGS	-	1
5	UPH0897	MANDREL FRICTION WASHER	1	1
6	UPH0210	MANDREL SPRING	1	1
7	UPH0895	MANDREL ADJUSTMENT NUT	1	1
8	UPH3764	MANDREL LOCKNUT	1	1
9	UPH0898	CORE LOCK, MANDREL ET 48	1	-
9	UPH0958	CORE LOCK, MANDREL ET 72	-	1
10	UF3149	SS SHCS M5 - 0.8 x 6 mm	2	2
11	UF6363	LW M6	3	3
12	UF6405	SHCS M6-1 x 10 mm	3	3